

APP CRS	Rwy Idg	N/A
124°	TDZE	N/A
	Apt Elev	1126

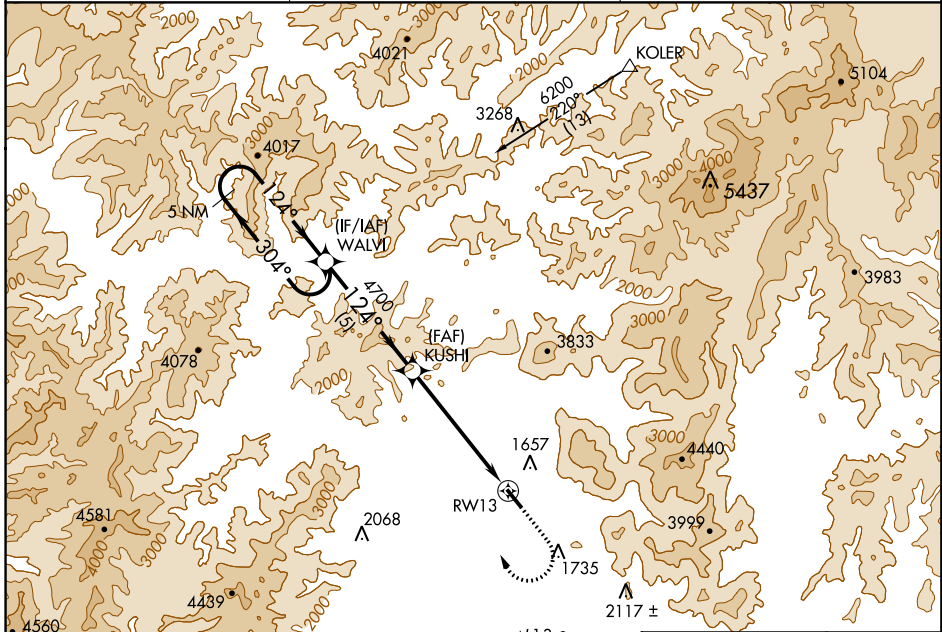
# RNAV (GPS)-A

GRANTS PASS (3S8)

**⚠** Circling NA northeast of Rwy 13-31. DME/DME RNP-0.3 NA. Visibility reduction by helicopters NA. When local altimeter setting not received, use Medford altimeter setting and increase all MDA 580 feet.

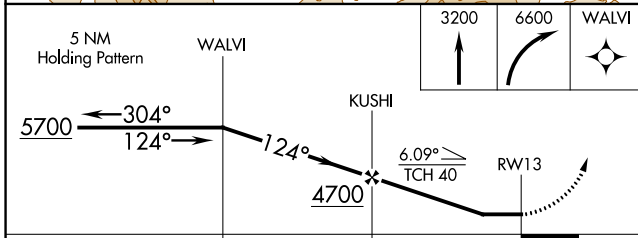
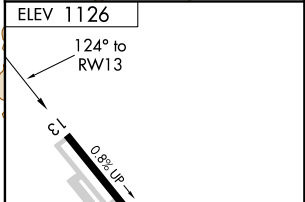
**MISSED APPROACH:** Climb to 3200 then climbing right turn to 6600 direct WALVI and hold, continue climb-in-hold to 6600.

AWOS-3PT <b>120.0</b>	CASCADE APP CON * <b>124.3 379.9</b>	UNICOM <b>122.8 (CTAF) 0</b>
--------------------------	---	---------------------------------



NW-1, 26 APR 2018 to 24 MAY 2018

NW-1, 26 APR 2018 to 24 MAY 2018



CATEGORY	A	B	C	D
CIRCLING	2920-1¼ 1794 (1800-1¼)	2920-1½ 1794 (1800-1½)		NA

