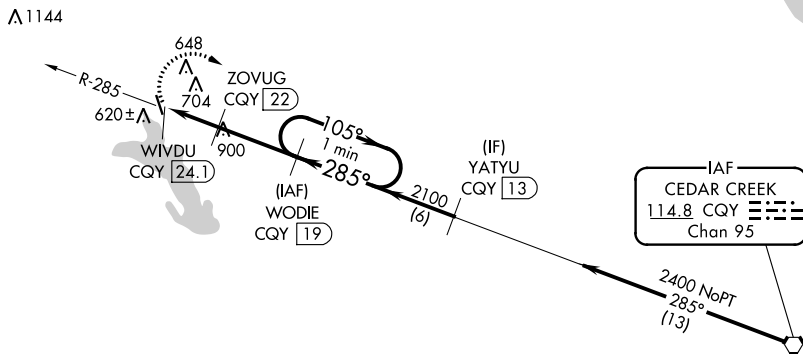


VORTAC CQY 114.8 Chan 95	APP CRS 285°	Rwy Idg TDZE Apt Elev N/A N/A 500
--	------------------------	--

VOR/DME-A
ENNIS MUNI (F41)

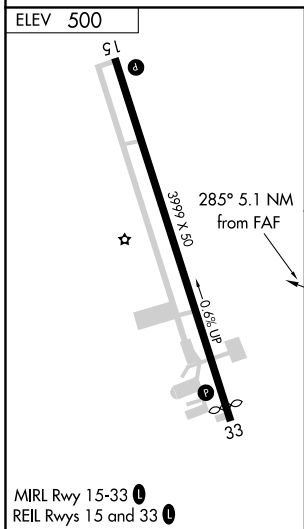
▼ Use Lancaster altimeter setting; when not received, use Mid-Way Rgnl and increase all MDA 40 feet
▲ NA MISSED APPROACH: Climbing right turn to 2400 on CQY R-285 to WODIE/19 DME and hold.

LANCASTER AWOS-3 118.975	REGIONAL APP CON 125.2 343.65	CTAF 122.9
------------------------------------	---	----------------------



SC-2, 26 APR 2018 to 24 MAY 2018

SC-2, 26 APR 2018 to 24 MAY 2018



MIRL Rwy 15-33 **1**
REIL Rwy 15 and 33 **1**

