

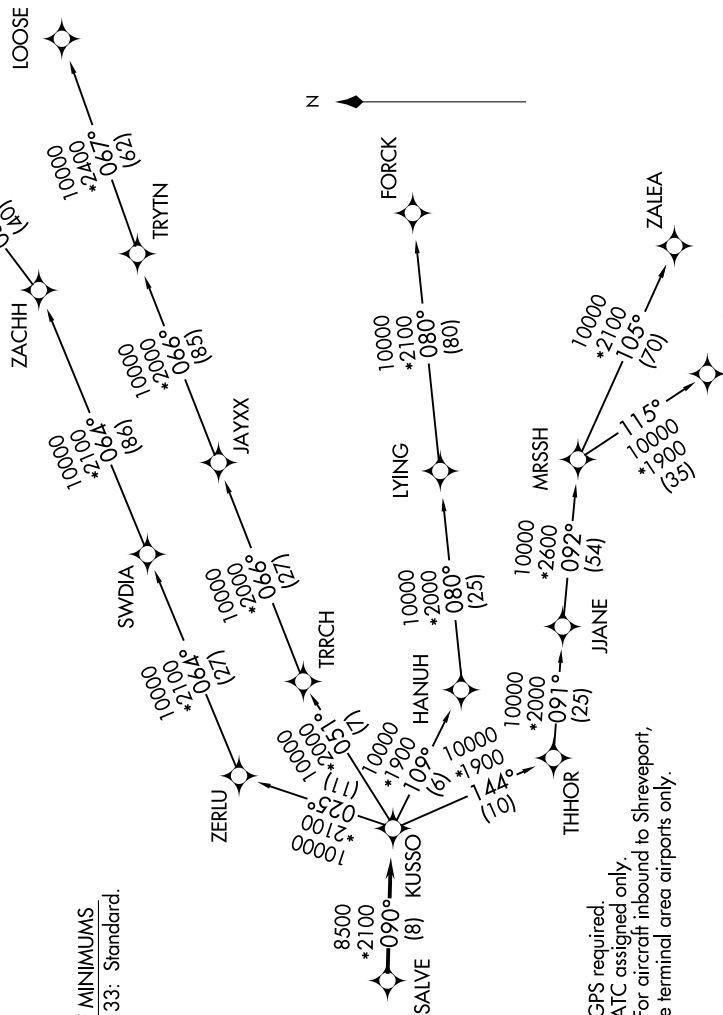
# KUSSO FIVE DEPARTURE (RNAV)

SC-2, 26 APR 2018 to 24 MAY 2018

REGIONAL DEP CON  
125.2 343.65  
CTAF 122.9

**TOP ALTITUDE:  
ASSIGNED BY ATC**

TAKEOFF MINIMUMS  
Rwys 15, 33: Standard.



NOTE: RADAR required.  
 NOTE: RNAV 1.  
 NOTE: DME/DME/IRU or GPS required.  
 NOTE: BDDAY transition: ATC assigned only.  
 NOTE: MRSSH transition: For aircraft inbound to Shreveport, Jackson and Monroe terminal area airports only.

(NARRATIVE ON FOLLOWING PAGE)

NOTE: Chart not to scale.

SC-2, 26 APR 2018 to 24 MAY 2018

# KUSSO FIVE DEPARTURE (RNAV)