

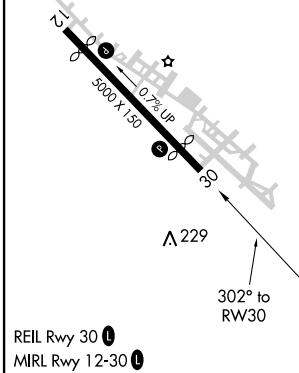
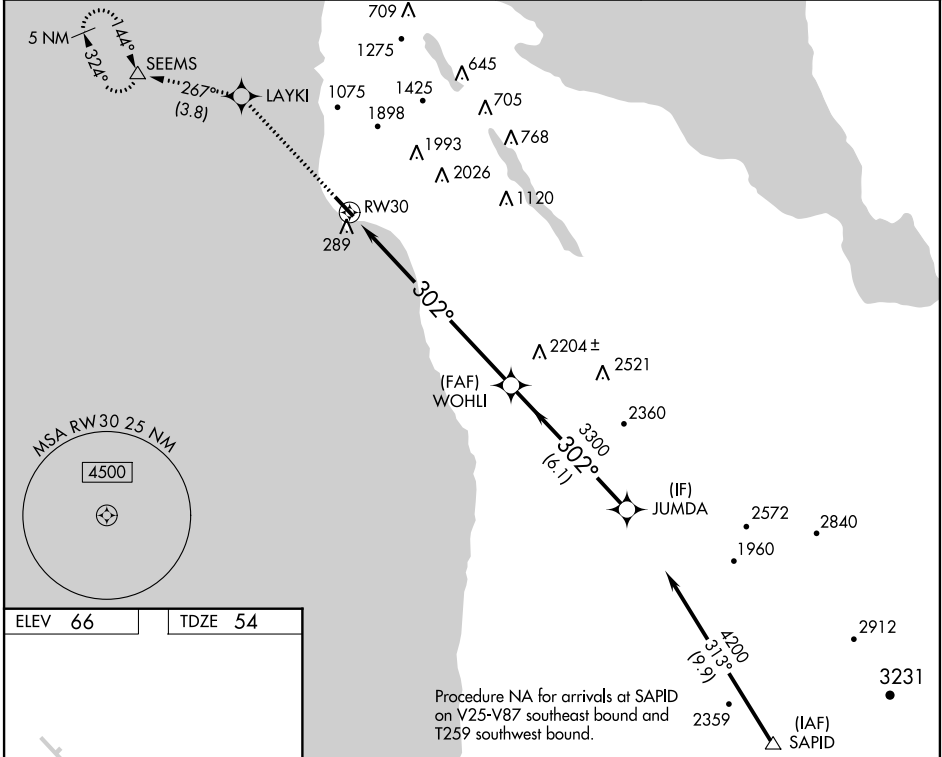
WAAS CH 50302 W30A	APP CRS 302°	Rwy Idg TDZE Apt Elev	4238 54 66
--	------------------------	-----------------------------	---------------------------------------

RNAV (GPS) Z RWY 30

HALF MOON BAY (HAF)

<p>NA DME/DME RNP-0.3 NA. When local altimeter setting not received, use San Francisco Intl altimeter setting.</p>	<p>MISSED APPROACH: Climb to 6000 direct LAYKI and on track 267° to SEEMS and hold, continue climb-in-hold to 6000.</p>
---	---

<p>AWOS 127.275</p>	<p>NORCAL APP CON 135.1 307.2</p>	<p>UNICOM 122.8 (CTAF)</p>
--------------------------------	--	---------------------------------------



6000	LAYKI	tr 267°	SEEMS	JUMDA
			WOHLI	
VGSi and RNAV glidepath not coincident (VGSi Angle 3.00/TCH 24).				
	RWY 30		3300	4200
			3300	GP 3.50° TCH 40
		8.5 NM	6.1 NM	
CATEGORY	A	B	C	D
LPV DA	363-1	309 (300-1)		NA
SAN FRANCISCO ALTIMETER SETTING MINIMUMS				
LPV DA	391-1	337 (400-1)		NA

SW-2, 26 APR 2018 to 24 MAY 2018

SW-2, 26 APR 2018 to 24 MAY 2018