

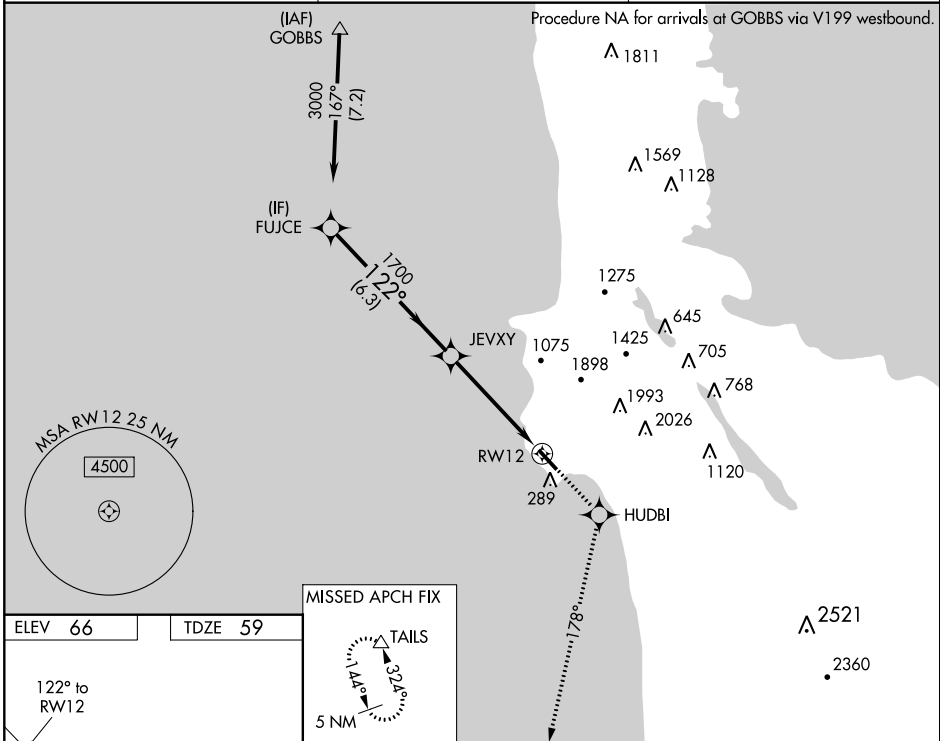
WAAS CH <b>93802</b> <b>W12A</b>	APP CRS <b>122°</b>	Rwy ldg <b>4248</b> TDZE <b>59</b> Apt Elev <b>66</b>
--	------------------------	---

# RNAV (GPS) Z RWY 12

HALF MOON BAY (HAF)

<p><b>NA</b> DME/DME RNP-0.3 NA. When local altimeter setting not received, use San Francisco Intl altimeter setting. Helicopter visibility reduction below 3/4 SM NA.</p>	<p>MISSED APPROACH: Climb to 6000 direct HUDBI and via 178° track to TAILS and hold, continue climb-in-hold to 6000.</p>
--	--

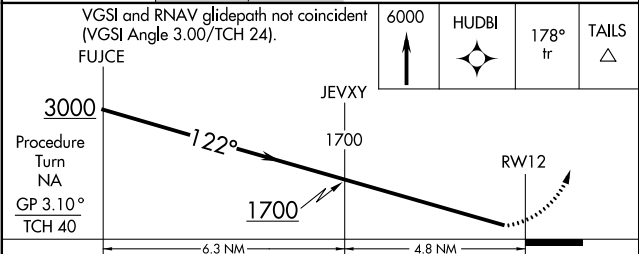
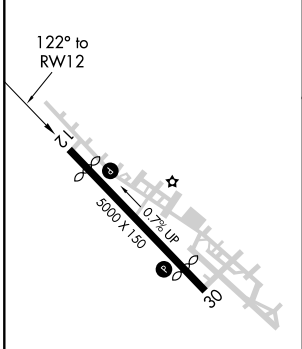
AWOS <b>127.275</b>	NORCAL APP CON <b>135.1 307.2</b>	UNICOM <b>122.8 (CTAF)</b>
------------------------	--------------------------------------	-------------------------------



SW-2, 26 APR 2018 to 24 MAY 2018

SW-2, 26 APR 2018 to 24 MAY 2018

ELEV 66	TDZE 59
---------	---------



CATEGORY	A	B	C	D
LPV DA	395-1¼	336 (400-1¼)		NA
SAN FRANCISCO ALTIMETER SETTING MINIMUMS				
LPV DA	423-1¼	364 (400-1¼)		NA