

APP CRS	Rwy Idg	<b>4248</b>
<b>122°</b>	TDZE	<b>59</b>
	Apt Elev	<b>66</b>

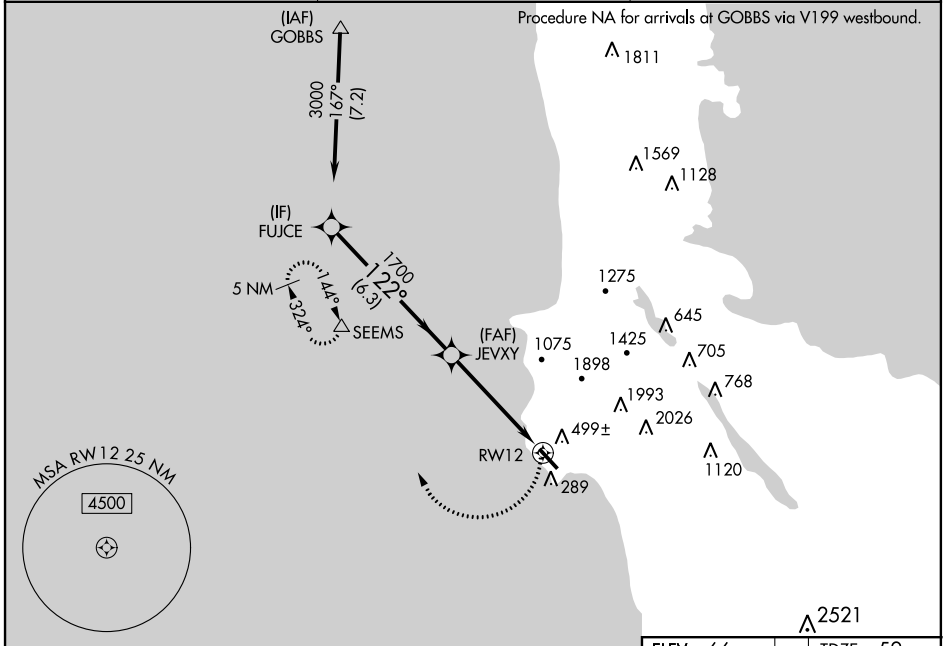
# RNAV (GPS) Y RWY 12

HALF MOON BAY (HAF)

**▽** Circling NA east of Rwy 12/30. DME/DME RNP -0.3 NA.  
**▲** Visibility reduction by helicopters NA.  
 VDP NA when using San Francisco Intl altimeter setting.  
 When local altimeter setting not received, use San Francisco Intl altimeter setting.

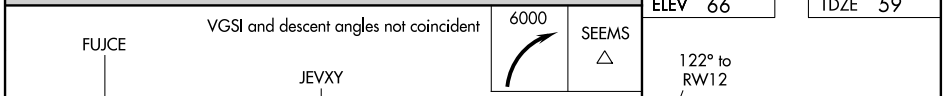
MISSED APPROACH: Climbing right turn to 6000 direct SEEMS and hold, continue climb-in-hold to 6000.

AWOS <b>127.275</b>	NORCAL APP CON <b>135.1 307.2</b>	UNICOM <b>122.8 (CTAF)</b>
------------------------	--------------------------------------	-------------------------------



SW-2, 26 APR 2018 to 24 MAY 2018

SW-2, 26 APR 2018 to 24 MAY 2018



CATEGORY	A	B	C	D
LNAV MDA	760-1	701 (700-1)		NA
CIRCLING	760-1	694 (700-1)		NA

SAN FRANCISCO ALTIMETER SETTING MINIMUMS				
LNAV MDA	780-1	721 (800-1)		NA
CIRCLING	780-1	714 (800-1)		NA

ELEV 66 TDZE 59

REIL Rwy 30  
MIRL Rwy 12-30