

WAAS CH <b>86917</b> <b>W05A</b>	APP CRS <b>049°</b>	Rwy Idg TDZE Apt Elev	<b>5105</b> <b>24</b> <b>26</b>
--	------------------------	-----------------------------	---------------------------------------

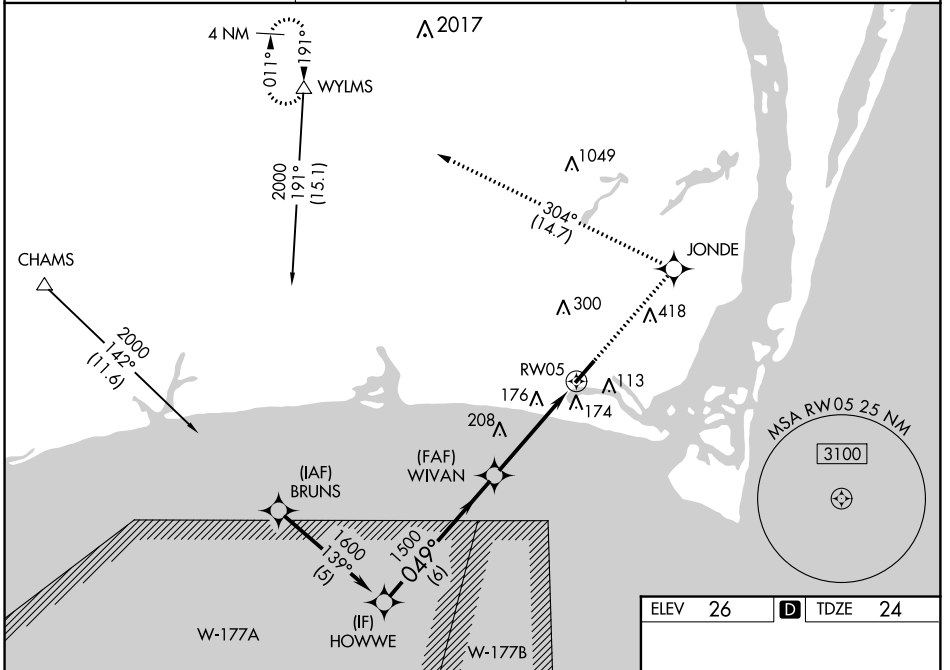
# RNAV (GPS) RWY 5

CAPE FEAR RGNL JETPORT/HOWIE FRANKLIN FLD (SU'T)

**▼** Baro-VNAV NA when using Wilmington altimeter setting. For uncompensated Baro-VNAV systems, LNAV/VNAV NA below -15°C (5°F) or above 54°C (130°F). DME/DME RNP-0.3 NA. Helicopter visibility reduction below 1 SM NA. When local altimeter setting not received, use Wilmington altimeter setting and increase all DA 53 feet and all MDA 60 feet; increase LNAV/VNAV all Cats visibility ¼ mile. VDP NA when using Wilmington altimeter setting.

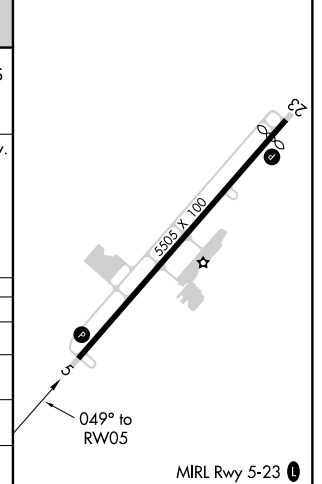
**▲** MISSED APPROACH: Climb to 3000 direct JONDE and left turn on track 304° to WYLSM and hold.

AWOS-3P <b>124.175</b>	WILMINGTON APP CON <b>118.25 284.65</b>	UNICOM <b>123.05 (CTAF) 0</b>
---------------------------	--	----------------------------------



ELEV 26	<b>D</b> TDZE 24
---------	------------------

Procedure	HOWWE			
	A	B	C	D
Turn NA				
GP 3.00° TCH 39				
	6 NM	3.2 NM	1.3 NM	
LPV DA	274-1	250 (300-1)		NA
LNAV/VNAV DA	460-1½	436 (500-1½)		NA
LNAV MDA	460-1	436 (500-1)	460-1¼ 436 (500-1¼)	NA
CIRCLING	480-1	454 (500-1)	520-1½ 494 (500-1½)	NA



SE-2: 26 APR 2018 to 24 MAY 2018

SE-2: 26 APR 2018 to 24 MAY 2018

# RNAV (GPS) RWY 5