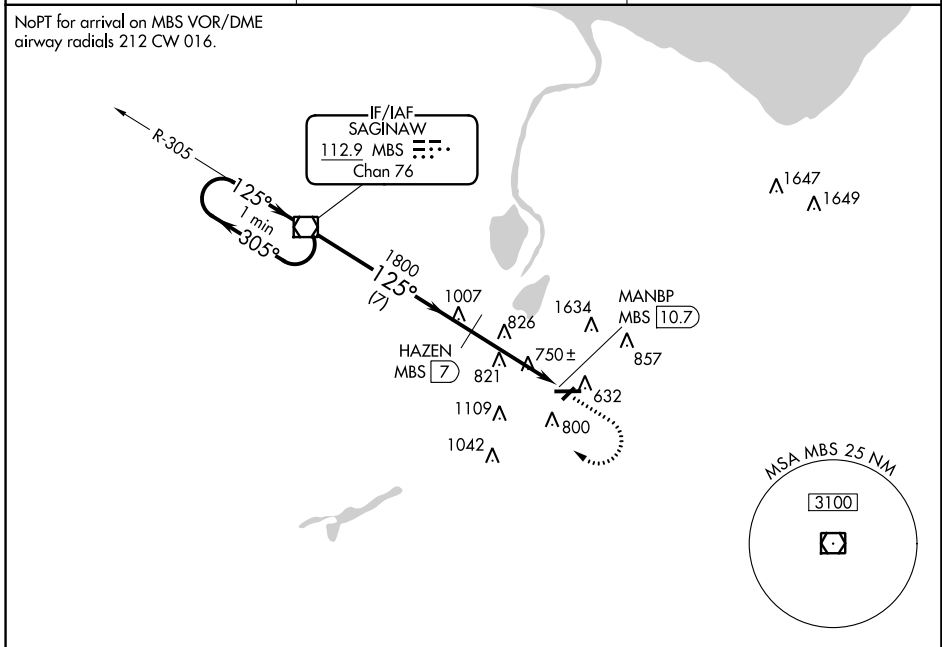


VOR/DME MBS 112.9 Chan 76	APP CRS 125°	Rwy Idg TDZE Apt Elev	N/A N/A 601
---	------------------------	-----------------------------	--

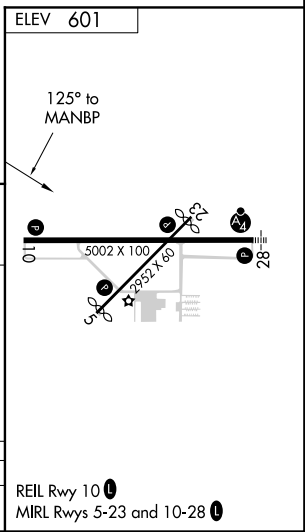
VOR/DME-A

SAGINAW COUNTY H W BROWNE (HYX)

<p>⚠ Circling to Rwy 5/23 NA at night. When local altimeter setting not received, use Saginaw MBS Intl altimeter setting and increase all MDA 40 feet.</p>		<p>MISSED APPROACH: Climb to 1900 then climbing right turn to 3000 direct MBS VOR/DME and hold.</p>
<p>AWOS-3 118.325</p>	<p>SAGINAW APP CON ★ 120.95 235.625</p>	<p>UNICOM 122.8 (CTAF) 0</p>



One Minute Holding Pattern	MBS VOR/DME	1900	3000	MBS
CATEGORY	A	B	C	D
CIRCLING	1160-1 559 (600-1)		1160-1½ 559 (600-1½)	NA



EC-1, 26 APR 2018 to 24 MAY 2018

EC-1, 26 APR 2018 to 24 MAY 2018

VOR/DME-A