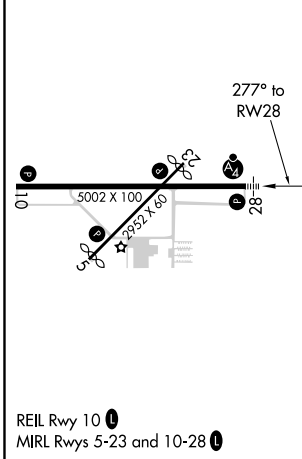
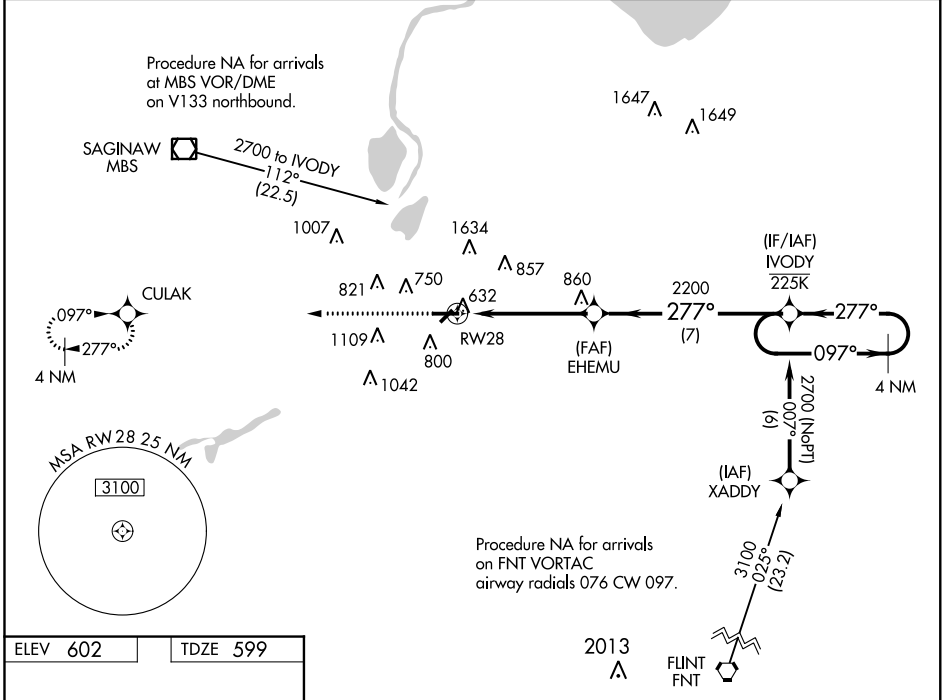


WAAS CH 90200 W28A	APP CRS 277°	Rwy Idg TDZE Apt Elev	5002 599 602
--	------------------------	-----------------------------	---

RNAV (GPS) RWY 28

SAGINAW COUNTY H W BROWNE (HYX)

<p>⚠ Inop table does not apply to LPV DA. For uncompensated Baro-VNAV systems, LNAV/VNAV NA below -18°C (0°F) or above 54°C (130°F). Circling NA for Cat C north of Rwy 10-28. Circling Rwy 5, 23 NA at night. DME/DME RNP-0.3 NA. For inop ALS, increase LNAV/VNAV all Cats visibility to ½ SM.</p>	<p>MALSF</p>	<p>MISSED APPROACH: Climb to 2800 direct CULAK and hold.</p>
	<p>AWOS-3 118.325</p>	<p>SAGINAW APP CON * 120.95 235.625</p>



ELEV 602	TDZE 599			
<p>2800 CULAK</p> <p>*LNAV only</p> <p>*1.4 NM to RWY 28</p> <p>EHEMU 2200</p> <p>IVODY 2700</p> <p>4 NM Holding Pattern</p> <p>GP 3.00° TCH 44</p>	<p>VGSI and RNAV glidepath not coincident (VGSI Angle 3.00/TCH 44).</p>			
CATEGORY	A	B	C	D
LPV DA	804-¾	205 (300-¾)		NA
LNAV/VNAV DA	849-¾	250 (300-¾)		NA
LNAV MDA	1080-¾	481 (500-¾)	1080-1⅛ 481 (500-1⅛)	NA
C CIRCLING	1100-1	498 (500-1)	1460-2½ 858 (900-2½)	NA