

WAAS CH 50200 W10A	APP CRS 097°	Rwy Idg TDZE Apt Elev	5002 600 602
--	------------------------	-----------------------------	---

RNAV (GPS) RWY 10

SAGINAW COUNTY H W BROWNE (HYX)

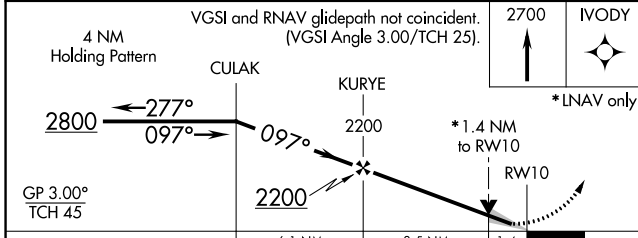
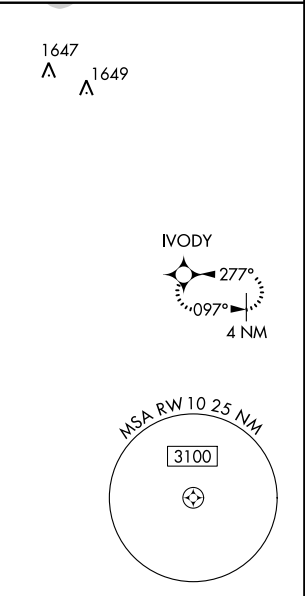
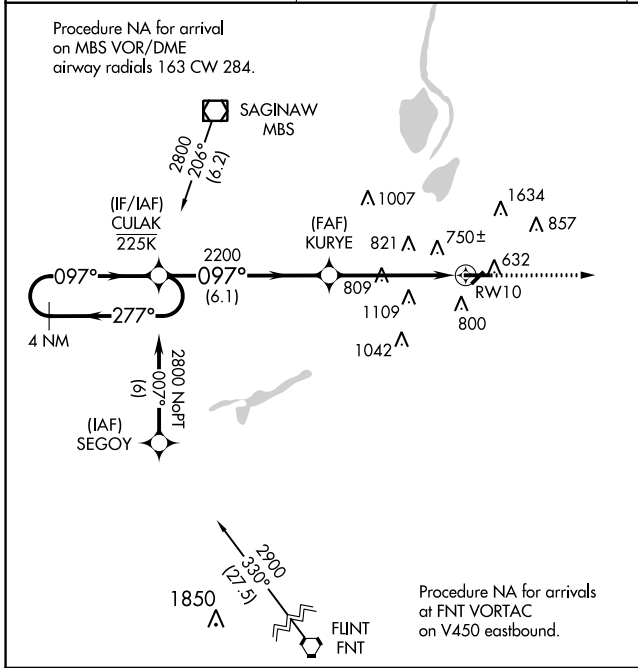
⚠ For uncompensated Baro-VNAV systems, LNAV/VNAV NA below -18°C (0°F) or above 54°C (130°F). Circling NA for Cat C north of Rwy 10-28. Circling Rwy 5, 23 NA at night. DME/DME RNP-0.3 NA.

MISSED APPROACH: Climb to 2700 direct IVODY and hold.

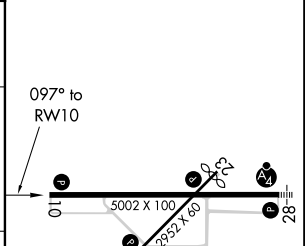
AWOS-3
118.325

SAGINAW APP CON *
120.95 235.625

UNICOM
122.8 (CTAF) 0



ELEV 602	TDZE 600
----------	----------



CATEGORY	A	B	C	D
LPV DA	800-3/4	200 (200-3/4)		NA
LNAV/VNAV DA	1018-13/8	418 (500-13/8)		NA
LNAV MDA	1060-1	460 (500-1)	1060-13/8 460 (500-13/8)	NA
C CIRCLING	1100-1	498 (500-1)	1460-21/2 858 (900-21/2)	NA

REIL Rwy 10 0
MIRL Rwy 5-23 and 10-28 0

EC-1, 26 APR 2018 to 24 MAY 2018

EC-1, 26 APR 2018 to 24 MAY 2018