

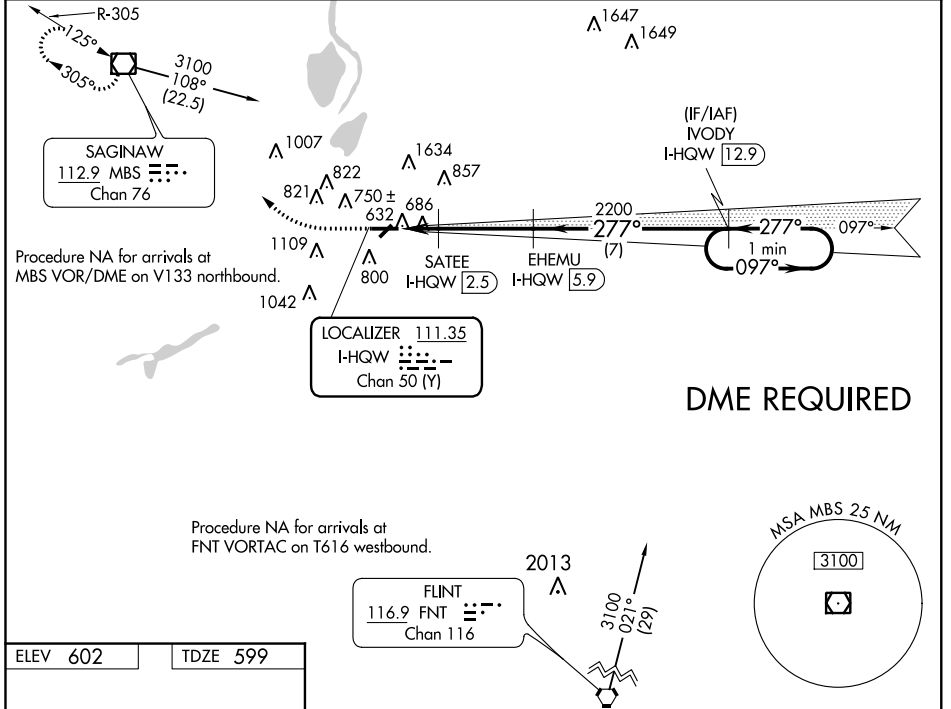
LOC/DME I-HQW 111.35 Chan 50 (Y)	APP CRS 277°	Rwy Idg TDZE Apt Elev	5002 599 602
--	------------------------	-----------------------------	---

ILS or LOC RWY 28

SAGINAW COUNTY H W BROWNE (HYX)

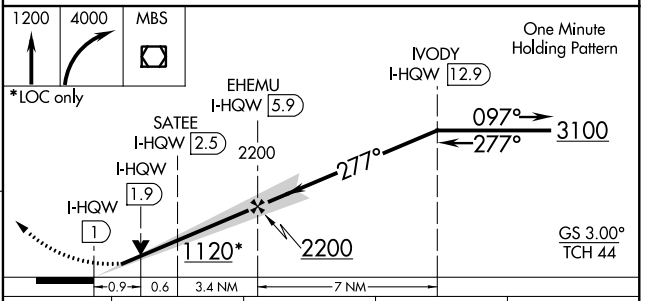
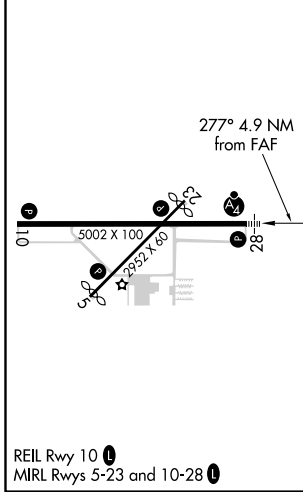
<p>⚠ Inoperative table does not apply to S-ILS 28. DME required. Circling Rwy 5, 23 NA at night. Circling NA for Cat C north of Rwy 10-28.</p>	<p>MALSF</p>	<p>MISSED APPROACH: Climb to 1200 then climbing right turn to 4000 direct MBS VOR/DME and hold, continue climb-in-hold to 4000.</p>
---	---------------------	--

<p>AWOS-3 118.325</p>	<p>SAGINAW APP CON ★ 120.95 235.625</p>	<p>UNICOM 122.8 (CTAF) 0</p>
----------------------------------	--	---



DME REQUIRED

ELEV 602	TDZE 599
----------	----------



CATEGORY	A	B	C	D
S-ILS 28		802-3/4	203 (200-3/4)	NA
S-LOC 28		940-3/4	341 (400-3/4)	NA
C CIRCLING	1100-1	498 (500-1)	1460-2/2 858 (900-2/2)	NA

EC-1, 26 APR 2018 to 24 MAY 2018

EC-1, 26 APR 2018 to 24 MAY 2018