

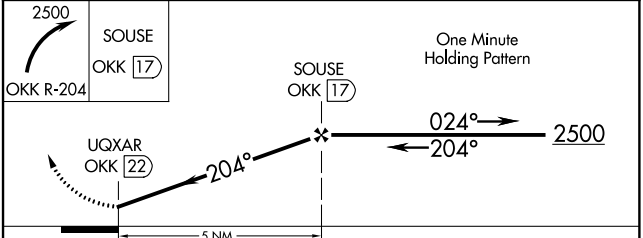
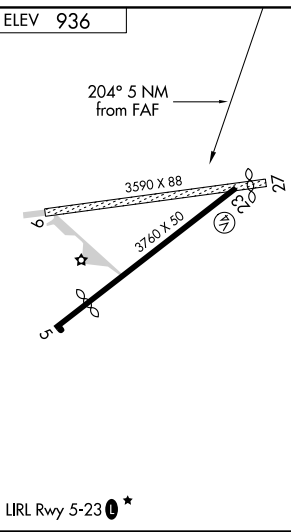
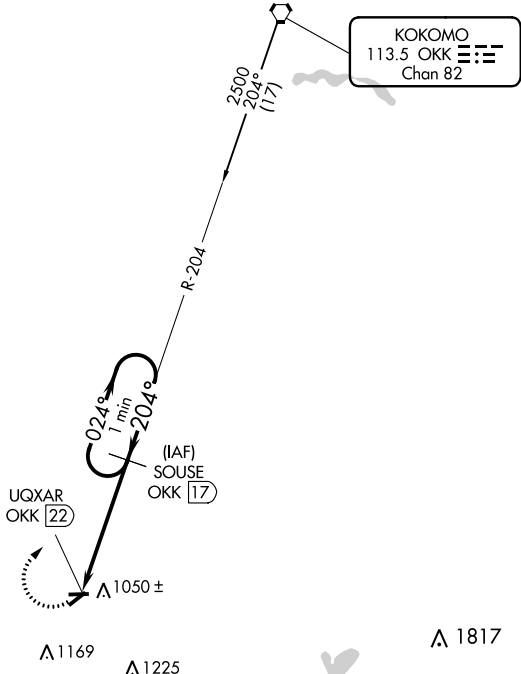
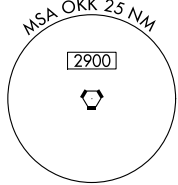
VORTAC OKK 113.5 Chan 82	APP CRS 204°	Rwy Idg TDZE Apt Elev	N/A N/A 936
--	------------------------	-----------------------------	--

VOR-A
SHERIDAN (5I4)

NA Procedure NA at night except by prior arrangement for runway lights. DME required. Use Indianapolis Intl altimeter setting. MISSED APPROACH: Climbing right turn to 2500 on OKK VORTAC R-204 to SOUSE/17 DME and hold.

INDIANAPOLIS ASOS 134.25	INDIANAPOLIS APP CON 124.65 317.8	UNICOM 123.075 (CTAF) 0
------------------------------------	---	--

DME REQUIRED



CATEGORY	A	B	C	D
CIRCLING	1460-1 524 (600-1)	1480-1 544 (600-1)	1480-1½ 544 (600-1½)	NA

EC-2: 26 APR 2018 to 24 MAY 2018

EC-2: 26 APR 2018 to 24 MAY 2018