

APP CRS	Rwy Idg	3760
232°	TDZE	932
	Apt Elev	936

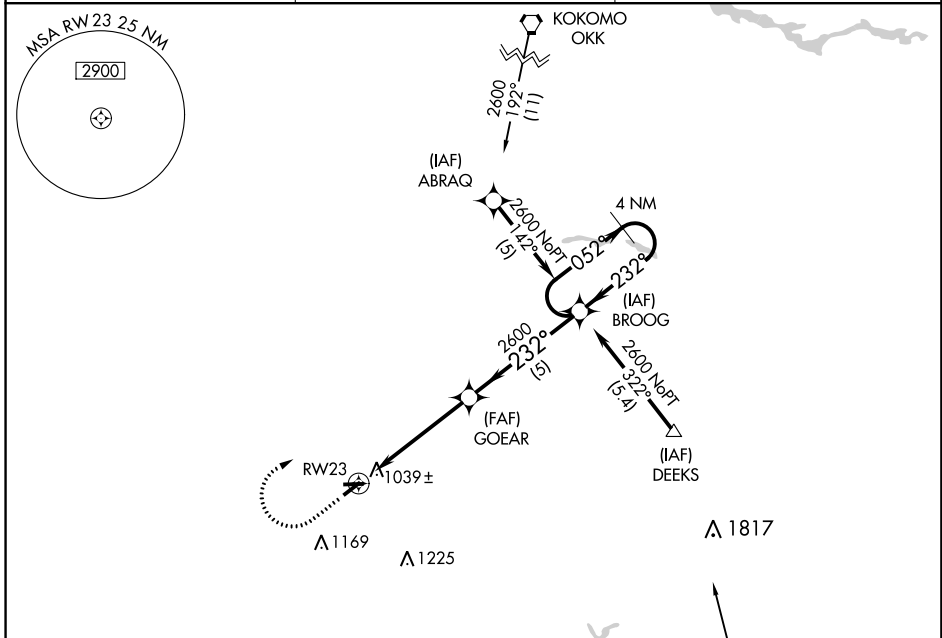
GPS RWY 23

SHERIDAN (5I4)

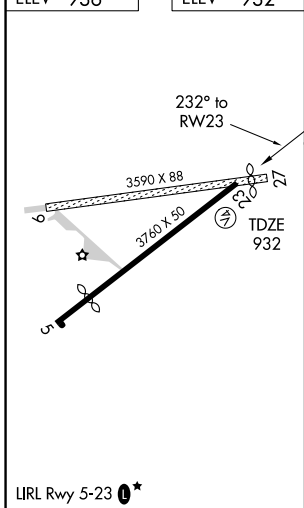
NA Use Indianapolis Intl altimeter setting. Procedure not authorized at night except by prior arrangement for runway lights.

MISSED APPROACH: Climb to 1800 then climbing right turn to 2600 direct BROOG WP and hold.

INDIANAPOLIS ASOS 134.25	INDIANAPOLIS APP CON 124.65 317.8	UNICOM 123,075 (CTAF) 0
------------------------------------	---	-----------------------------------



ELEV 936	ELEV 932
----------	----------



1800	2600	BROOG	One Minute Holding Pattern	
↑	↷	✧	GOEAR	BROOG
RWY 23		2600		2600
↙ 232°		→ 052°		← 232°
5 NM		5 NM		
CATEGORY	A	B	C	D
S-23	1380-1	448 (500-1)	1380-1¼ 448 (500-1¼)	NA
CIRCLING	1460-1 524 (600-1)	1480-1 544 (600-1)	1480-1½ 544 (600-1½)	NA

EC-2, 26 APR 2018 to 24 MAY 2018

EC-2, 26 APR 2018 to 24 MAY 2018