

WAAS CH 66035 W13A	APP CRS 129°	Rwy Idg 4003 TDZE 564 Apt Elev 585
---------------------------------	------------------------	---

RNAV (GPS) RWY 13

MARSHALL COUNTY (C75)

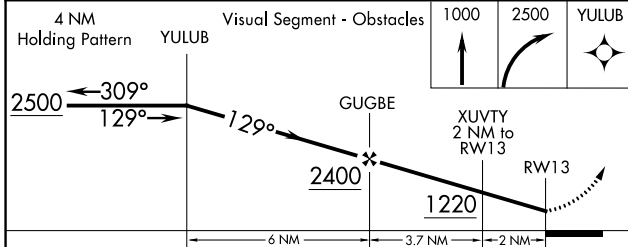
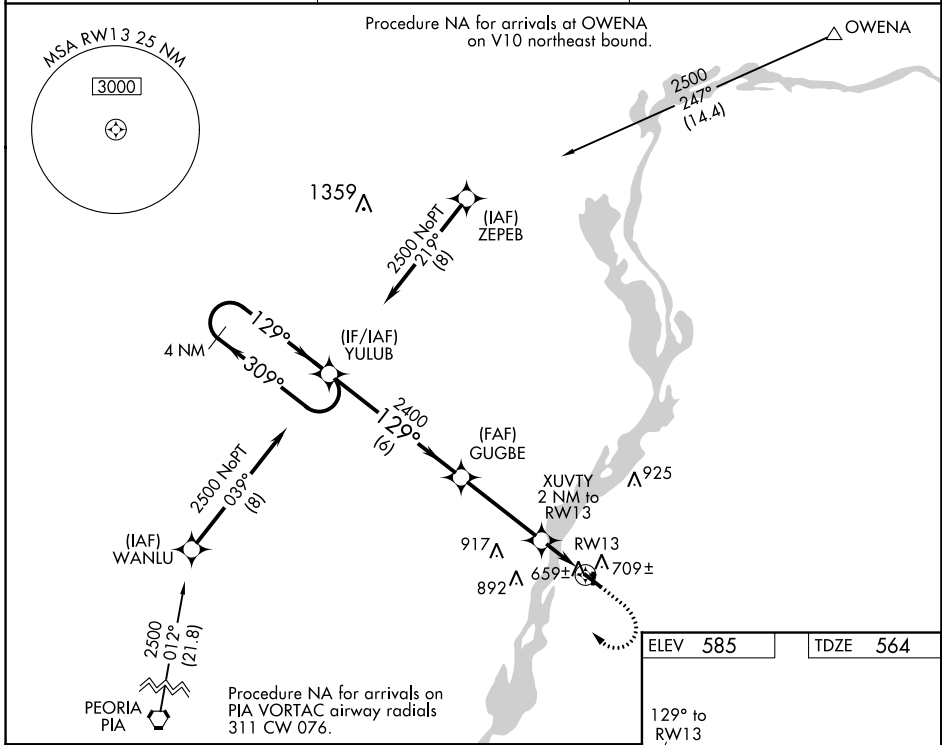
⚠ DME/DME RNP-0.3 NA. Helicopter visibility reduction below ¾ SM NA. When local altimeter setting not received, use Peru altimeter setting and increase all MDA 80 feet and increase LP and Circling Cat C visibilities ¼ mile and LNAV Cat C visibility ½ mile. Night landing: Rwy 18, 31, 36 NA.

MISSED APPROACH: Climb to 1000 then climbing right turn to 2500 direct YULUB and hold.

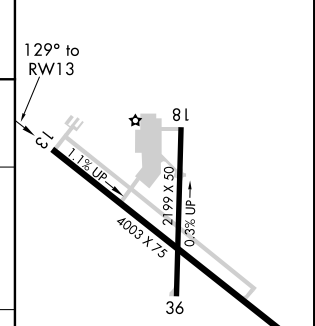
AWOS-3
119.425

CHICAGO CENTER
124.55 398.9

UNICOM
122.8 (CTAF) ①



ELEV 585	TDZE 564
----------	----------



CATEGORY	A	B	C	D
LP MDA	920-1	356 (400-1)	920-1½ 356 (400-1½)	NA
LNAV MDA	960-1	396 (400-1)	960-1¼ 396 (400-1¼)	NA
C CIRCLING	1100-1	515 (600-1)	1200-1¾ 615 (700-1¾)	NA

REIL Rwy 13 ①
MIRL Rwy 13-31 ①
LIRL Rwy 18-36

EC-3: 26 APR 2018 to 24 MAY 2018

EC-3: 26 APR 2018 to 24 MAY 2018