

RNAV (GPS) RWY 4

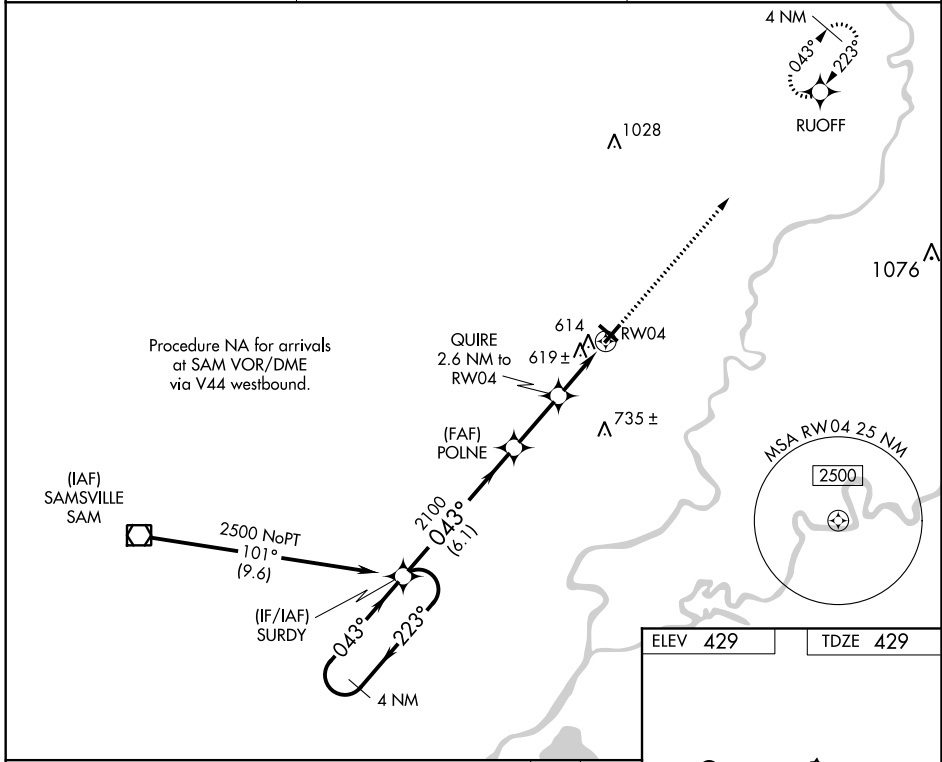
MOUNT CARMEL MUNI (AJG)

| | | |
|-------------|----------|-------------|
| APP CRS | Rwy Idg | 4000 |
| 043° | TDZE | 429 |
| | Apt Elev | 429 |

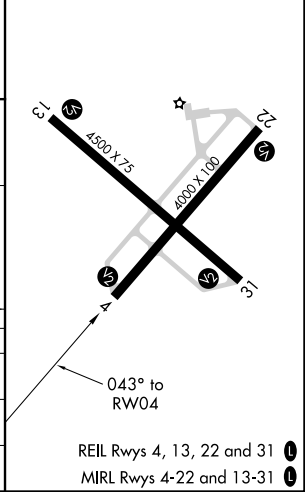
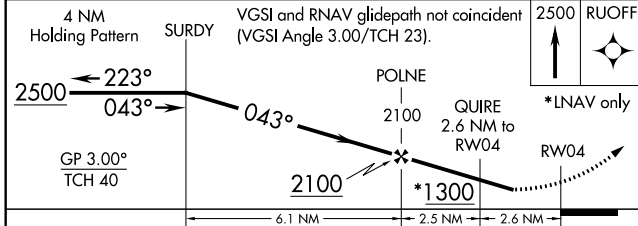
⚠ Baro-VNAV NA when using Lawrenceville altimeter setting. For uncompensated Baro-VNAV systems, LNAV/VNAV NA below -15°C (5°F) or above 54°C (130°F). DME/DME RNP-0.3 NA. Helicopter visibility reduction below 3/4 SM NA. When local altimeter setting not received, use Lawrenceville altimeter setting and increase all DA 26 feet and all MDA 40 feet, increase LNAV/VNAV all Cats visibility 1/4 mile.

MISSED APPROACH:
Climb to 2500 direct RUOFF and hold.

| | | |
|------------------------|---|---------------------------------|
| AWOS-3 134.9 | EVANSVILLE APP CON* 125.6 343.7 | UNICOM 122.7 (CTAF) 0 |
|------------------------|---|---------------------------------|



| | |
|----------|----------|
| ELEV 429 | TDZE 429 |
|----------|----------|



| CATEGORY | A | B | C | D |
|---------------|---------------------------|-------------|---------------------------|----|
| LNAV/ VNAV DA | 937-1 3/4 508 (600-1 1/2) | | | NA |
| LNAV MDA | 920-1 | 491 (500-1) | 920-1 1/4 491 (500-1 1/4) | NA |
| CIRCLING | 980-1 | 551 (600-1) | 980-1 1/2 551 (600-1 1/2) | NA |

EC-3: 26 APR 2018 to 24 MAY 2018

EC-3: 26 APR 2018 to 24 MAY 2018