

APP CRS <b>173°</b>	Rwy Idg <b>4842</b>
	TDZE <b>651</b>
	Apt Elev <b>651</b>

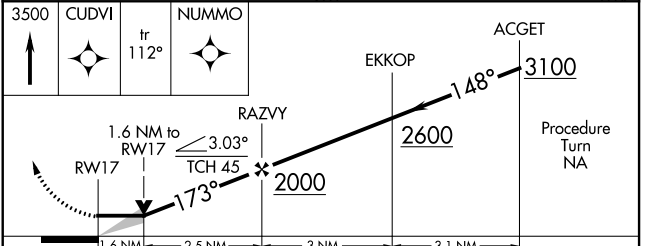
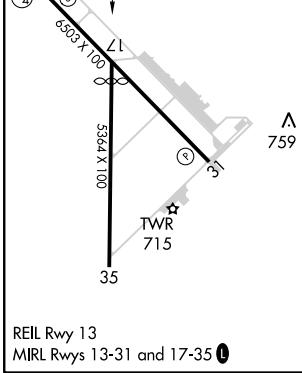
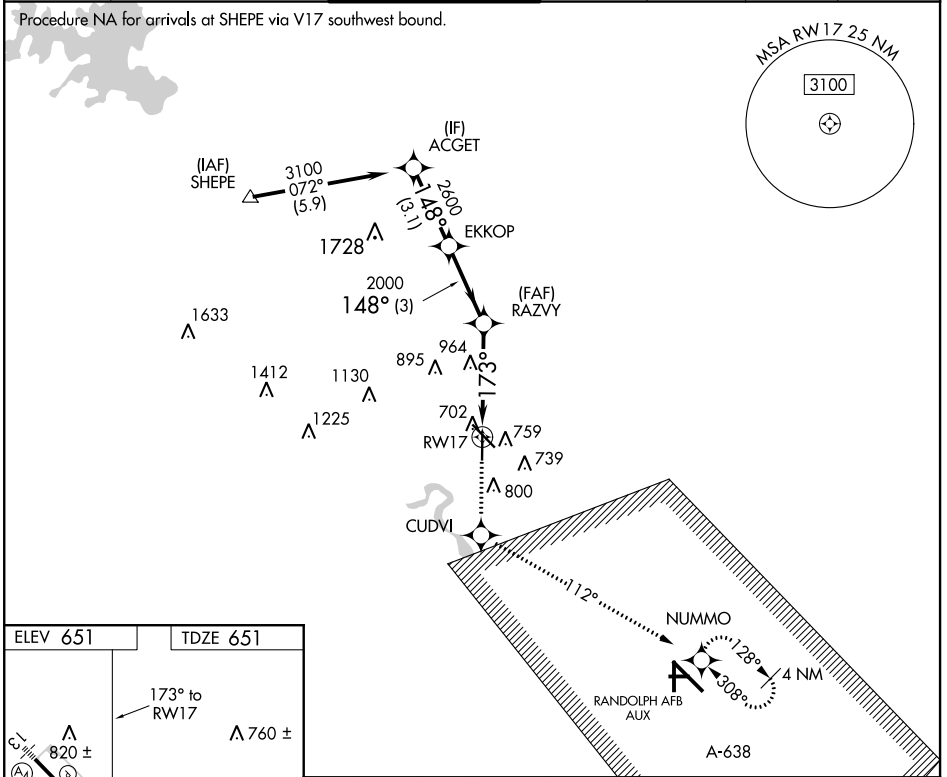
# RNAV (GPS) RWY 17

NEW BRAUNFELS RGNL (BAZ)

**⚠** When local altimeter setting not received, use San Marcos Muni altimeter setting and increase all MDAs 60 feet, increase LNAV and circling visibility Cats C and D ¼ mile. VDP NA when using San Marcos Muni altimeter setting. DME/DME RNP-0.3 NA.

**MISSED APPROACH:** Climb to 3500 direct CUDVI and via 112° track to NUMMO and hold, continue climb-in-hold to 3500.

ATIS <b>119.325</b>	SAN ANTONIO APP CON <b>124.45 335.625</b>	NEW BRAUNFELS TOWER ★ <b>127.05 285.4</b>	GND CON <b>120.175</b>	CLNC DEL <b>134.75</b>	UNICOM <b>122.7</b>	CTAF <b>127.05</b> <b>📍</b>
------------------------	--	--	---------------------------	---------------------------	------------------------	--------------------------------



CATEGORY	A	B	C	D
LNAV MDA	1220-1	569 (600-1)	1220-1½ 569 (600-1½)	1220-1¾ 569 (600-1¾)
CIRCLING	1220-1	569 (600-1)	1280-1¾ 629 (700-1¾)	1280-2 629 (700-2)

SC-3: 26 APR 2018 to 24 MAY 2018

SC-3: 26 APR 2018 to 24 MAY 2018