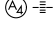


WAAS CH 82435 W13A	APP CRS 128°	Rwy Idg TDZE Apt Elev	6503 658 658
---------------------------------	------------------------	-----------------------------	---


RNAV (GPS) RWY 13

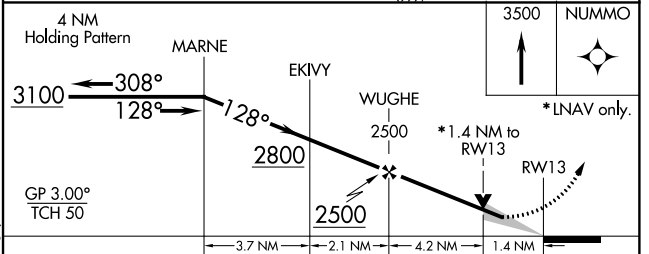
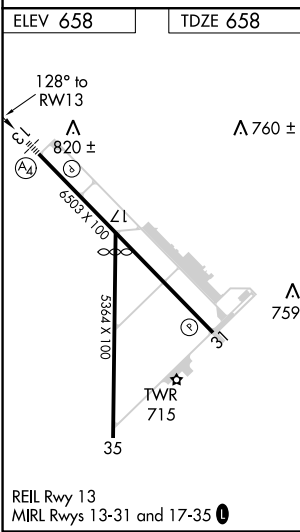
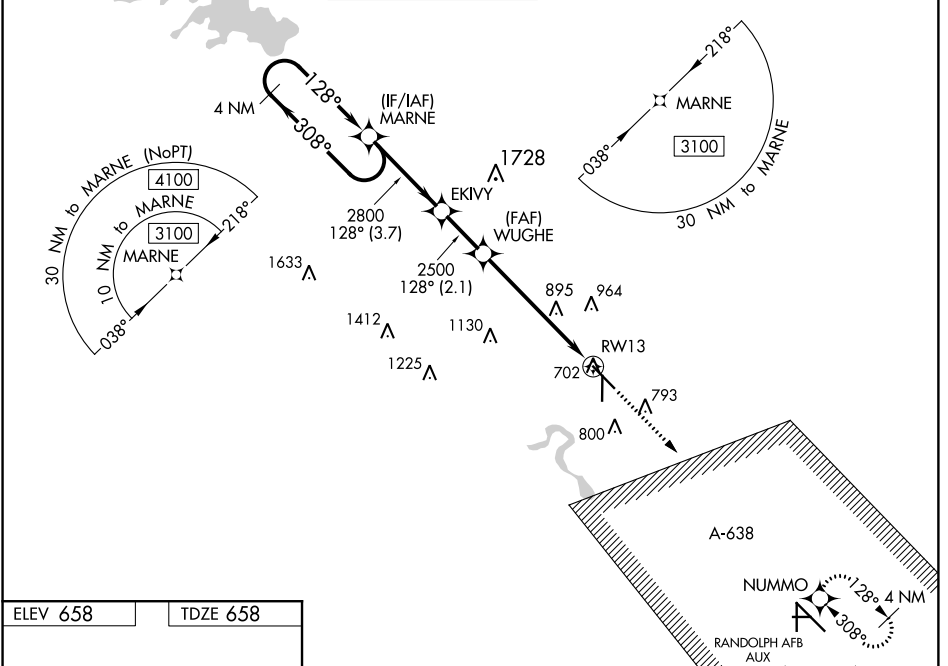
NEW BRAUNFELS RGNL (BAZ)


⚠ DME/DME RNP-0.3 NA. When local altimeter setting not received, use San Marcos altimeter setting and increase all DA 43 feet and all MDA 60 feet, and increase LNAV/VNAV all Cats visibility 1/8 mile, increase Circling Cat C, D visibility 1/4 mile. For uncompensated Baro-VNAV systems, LNAV/VNAV NA below -6°C (22°F) or above 54°C (130°F). Baro-VNAV and VDP NA when using San Marcos altimeter setting.

MALS 

MISSED APPROACH: Climb to 3500 direct NUMMO and hold, continue climb-in-hold to 3500.

ATIS 119.325	SAN ANTONIO APP CON 124.45 335.625	NEW BRAUNFELS TOWER * 127.05 285.4	GND CON 120.175	CLNC DEL 134.75	UNICOM 122.7	CTAF 127.05 
------------------------	--	---	---------------------------	---------------------------	------------------------	---



CATEGORY	A	B	C	D
LPV DA		908-3/4	250 (300-3/4)	
LNAV/VNAV DA		1039-1 1/4	381 (400-1 1/4)	
LNAV MDA	1160-1	502 (600-1)	1160-1 3/8 502 (600-1 3/8)	
 CIRCLING	1160-1 502 (600-1)	1240-1 582 (600-1)	1280-1 3/4 622 (700-1 3/4)	1320-2 662 (700-2)

SC-3: 26 APR 2018 to 24 MAY 2018

SC-3: 26 APR 2018 to 24 MAY 2018