

WAAS CH <b>72709</b> <b>W27A</b>	APP CRS <b>272°</b>	Rwy Idg TDZE Apt Elev	<b>4201</b> <b>912</b> <b>914</b>
--	------------------------	-----------------------------	---

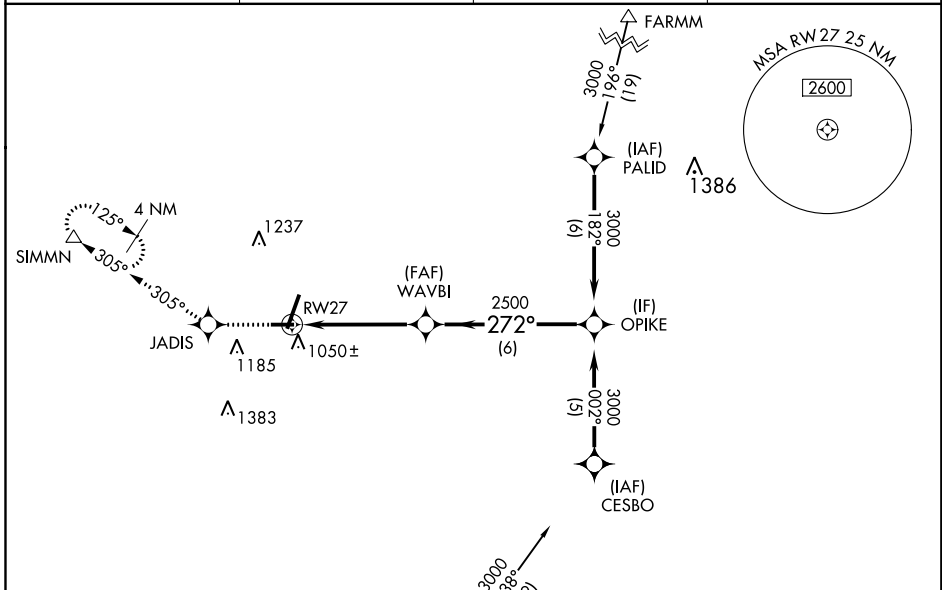
# RNAV (GPS) RWY 27

DE KALB TAYLOR MUNI (DKB)

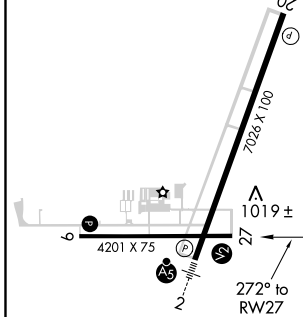
**⚠** When local altimeter setting not received, use Aurora altimeter setting and increase all DA 61 feet and all MDA 80 feet; increase all LPV and LNAV/VNAV visibilities, LNAV Cats C/D visibility, and Circling Cats C/D visibility ¼ mile. Baro-VNAV NA when using Aurora altimeter setting. VDP NA when using Aurora altimeter setting. For uncompensated Baro-VNAV systems, LNAV/VNAV NA below -16° C (4°F) or above 47° C (116° F). DME/DME RNP-0.3 NA.

**⚠** MISSED APPROACH: Climb to 3000 direct JADIS and via 305° track to SIMMN and hold.

AWOS-3 <b>119.075</b>	CHICAGO APP CON <b>133.5 349.0</b>	GCO <b>121.725</b>	UNICOM <b>122.7 (CTAF) 0</b>
--------------------------	---------------------------------------	-----------------------	---------------------------------



ELEV 914	TDZE 912
----------	----------



3000	JADIS	305° tr	SIMMN	VGSI and RNAV glidepath not coincident (VGSI Angle 3.00/TCH 22).
*LNAV only.				Procedure Turn NA
*1.3 NM to RWY 27				GP 3.00° TCH 45
WAVBI				OPIKE
RWY 27				3000
1.3 NM				3.4 NM
6 NM				

CATEGORY	A	B	C	D
LPV DA	1162-¾		250 (300-¾)	
LNAV/VNAV DA	1317-1½		405 (500-1½)	
LNAV MDA	1360-1	448 (500-1)	1360-1¼ 448 (500-1¼)	1360-1½ 448 (500-1½)
CIRCLING	1360-1 446 (500-1)	1480-1 566 (600-1)	1540-1¾ 626 (700-1¾)	1540-2 626 (700-2)

EC-3, 26 APR 2018 to 24 MAY 2018

EC-3, 26 APR 2018 to 24 MAY 2018