

WAAS CH 58109 W02A	APP CRS 021°	Rwy Idg TDZE Apt Elev	7026 913 914
--	------------------------	-----------------------------	---

RNAV (GPS) RWY 2

DE KALB TAYLOR MUNI (DKB)

▼ Baro-VNAV NA when using Aurora altimeter setting. For uncompensated Baro-VNAV systems, LNAV/VNAV NA below -16°C (4°F) or above 47°C (116°F). DME/DME RNP-0.3 NA. VDP NA when using Aurora altimeter setting. When local altimeter setting not received, use Aurora altimeter setting and increase all DA 61 feet and all MDA 80 feet; increase all LPV and LNAV/VNAV visibilities, LNAV Cats C/D visibility, and Circling Cats C/D visibility ¼ mile. For inop MALSR, increase LPV all Cats visibility to 1.

MALSRL

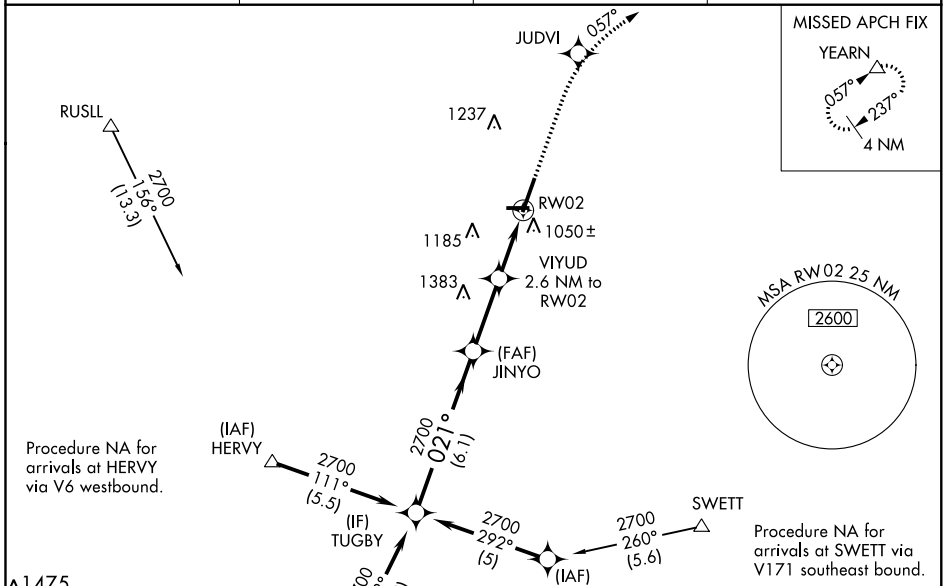
MISSED APPROACH:
Climb to 3000 direct JUDVI and via 057° track to YEARN and hold.

AWOS-3
119.075

CHICAGO APP CON
133.5 349.0

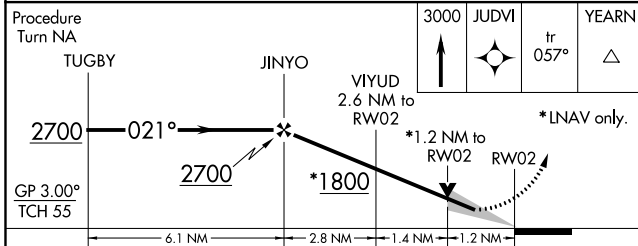
GCO
121.725

UNICOM
122.7 (CTAF) 0

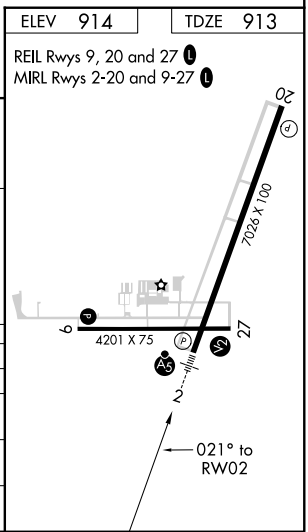


Procedure Turn NA

3000	JUDVI	YEARN
		tr 057° Δ



CATEGORY	A	B	C	D
LPV DA	1207-½		294 (300-½)	
LNAV/VNAV DA	1360-1		447 (500-1)	
LNAV MDA	1360-½	447 (500-½)	1360-¾ 447 (500-¾)	1360-1 447 (500-1)
CIRCLING	1360-1 446 (500-1)	1480-1 566 (600-1)	1540-1¾ 626 (700-1¾)	1540-2 626 (700-2)



EC-3: 26 APR 2018 to 24 MAY 2018

EC-3: 26 APR 2018 to 24 MAY 2018