

LOC/DME I-DJK 109.95 Chan 36 (Y)	APP CRS 022°	Rwy Idg 7026 TDZE 913 Apt Elev 914
--	------------------------	---

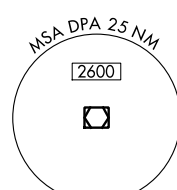
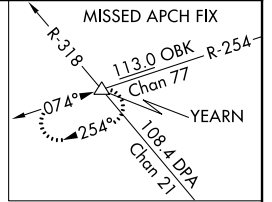
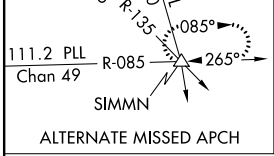
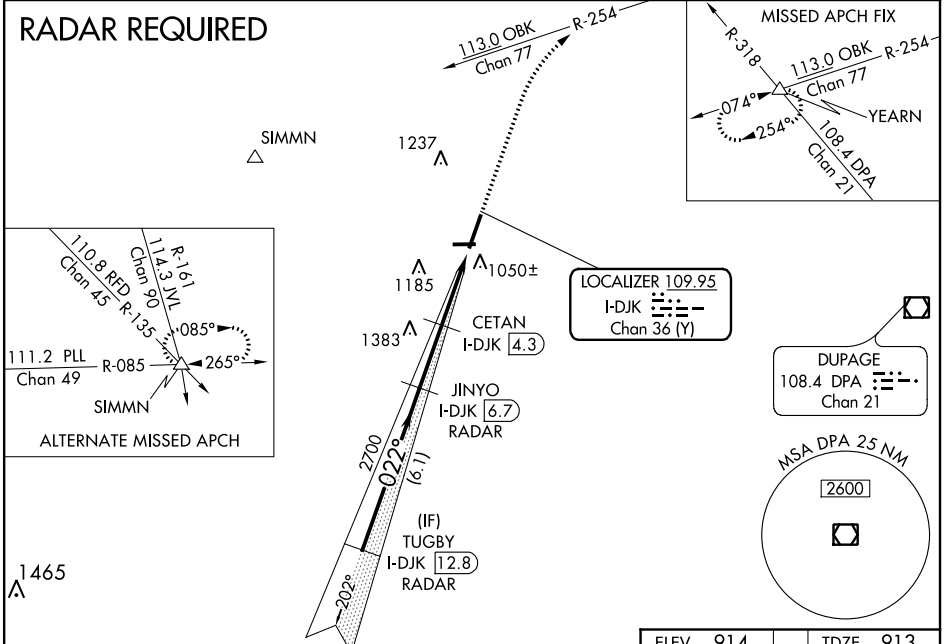
ILS or LOC RWY 2

DE KALB TAYLOR MUNI (DKB)

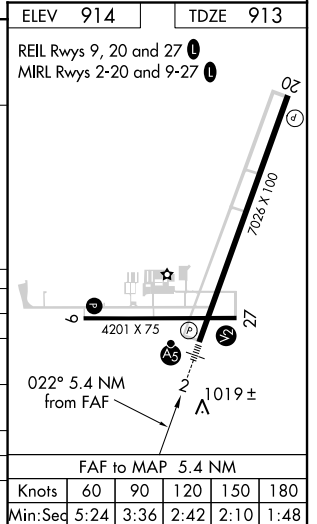
⚠ VDP NA when using Aurora altimeter setting. When local altimeter setting not received, use Aurora altimeter setting and increase all DA 61 feet and all MDA 80 feet, CETAN fix minimums increase Circling Cat C/D visibility ¼ mile. For inoperative MALSR, increase S-ILS 2 all Cats visibility to ¾ mile. CETAN fix minimums: For inoperative MALSR, increase S-LOC 2 Cat C/D visibility to 1 mile.

MALSR
MISSED APPROACH: Climb to 3000 on heading 022° and OBK VOR/DME R-254 to YEARN Int and hold.

AWOS-3 119.075	CHICAGO APP CON 133.5 349.0	GCO 121.725	UNICOM 122.7 (CTAF) 0
--------------------------	---------------------------------------	-----------------------	--



TUGBY I-DJK [12.8] RADAR	JINYO I-DJK [6.7] RADAR	CETAN I-DJK [4.3]	OBK R-254	YEARN Δ
2700	2700	2700	3000	
hdg 022°		*LOC only		
GS 3.00° TCH 55	2700	*1900	*I-DJK [2.4]	I-DJK [1.3]
6.1 NM	2.4 NM	1.9 NM	1.1 NM	
CATEGORY	A	B	C	D
S-ILS 2		1113-1/2	200 (200-1/2)	
S-LOC 2	1900-3/4 987 (1000-3/4)	1900-1 987 (1000-1)	1900-2 1/2	987 (1000-2 1/2)
CIRCLING	1900-1 1/4 986 (1000-1 1/4)	1900-1 1/2 986 (1000-1 1/2)	1900-3	986 (1000-3)
CETAN FIX MINIMUMS				
S-LOC 2	1280-1/2	367 (400-1/2)	1280-5/8	367 (400-5/8)
CIRCLING	1360-1 446 (500-1)	1480-1 566 (600-1)	1540-1 3/4 626 (700-1 3/4)	1540-2 626 (700-2)



EC-3, 26 APR 2018 to 24 MAY 2018

EC-3, 26 APR 2018 to 24 MAY 2018