

WAAS CH 99510 W10A	APP CRS 102°	Rwy Idg 5506 TDZE 1014 Apt Elev 1014
----------------------------------------	------------------------	-----------------------------------------------------------------

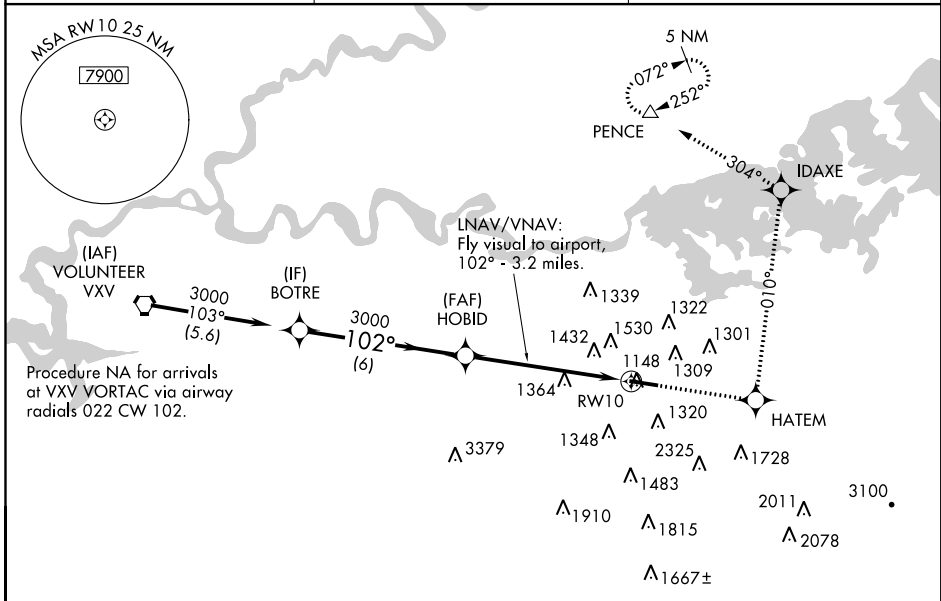
RNAV (GPS) RWY 10

GATLINBURG-PIGEON FORGE (GKT)

⚠ LNAV/VNAV NA when using Mc Ghee Tyson altimeter setting. For uncompensated Baro-VNAV systems, LNAV/VNAV NA below -17°C (2°F) or above 47°C (116°F).
⚠ NA DME/DME RNP-0.3 NA. Helicopter visibility reduction below 3/4 SM NA. When local altimeter setting not received, use Mc Ghee Tyson altimeter setting and increase all DA/MDA 60 feet and increase LPV all Cats and LNAV and Circling Cats C/D visibility 1/4 mile. Circling to Rwy 28 NA at night.

MISSED APPROACH: Climb to 4000 direct HATEM and via 010° track to IDAXE and via 304° track to PENCE and hold.

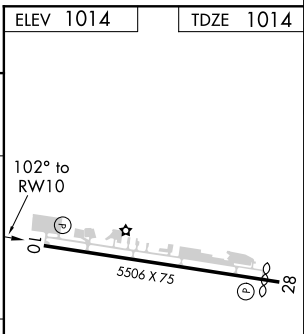
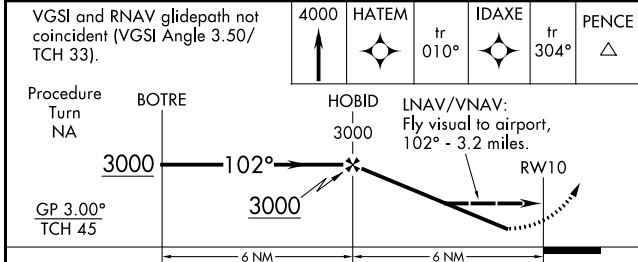
AWOS-3 126.875	KNOXVILLE APP CON 132.8 360.8	UNICOM 123.0 (CTAF) 0
--------------------------	-----------------------------------------	---------------------------------



SE-1, 26 APR 2018 to 24 MAY 2018

SE-1, 26 APR 2018 to 24 MAY 2018

ELEV 1014	TDZE 1014
-----------	-----------



CATEGORY	A	B	C	D
LPV DA	1371-1¼		357 (400-1¼)	
LNAV/ VNAV DA	2013-2	999 (1000-2)	2013-3	999 (1000-3)
LNAV MDA	1800-1 786 (800-1)	1800-1¼ 786 (800-1¼)	1800-2¼ 786 (800-2¼)	1800-2½ 786 (800-2½)
CIRCLING	1800-1 786 (800-1)	1880-1¼ 866 (900-1¼)	1880-2½ 866 (900-2½)	1880-2¾ 866 (900-2¾)

REIL Rws 10 and 28
MIRL Rwy 10-28 0