

VOR/DME BSV 112.4 Chan 71	APP CRS 127°	Rwy Idg TDZE Apt Elev 1164	N/A N/A 1164
---	------------------------	--------------------------------------	---

VOR-A

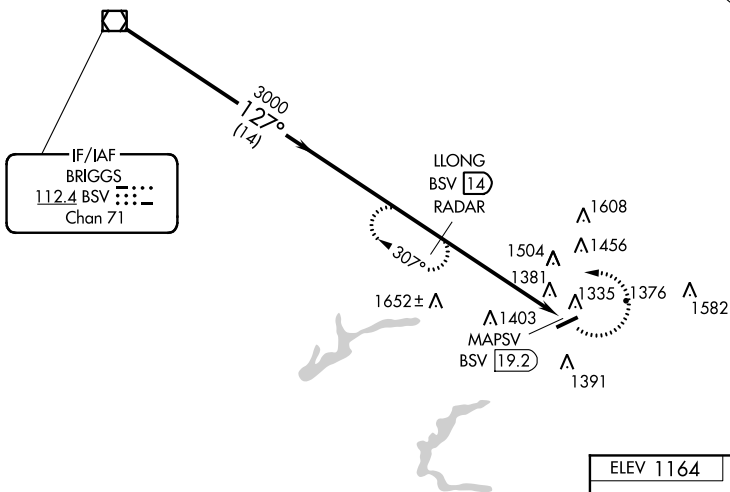
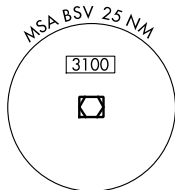
CARROLL COUNTY-TOLSON (T50)

⚠ Use Akron-Canton altimeter setting; when not received, use New Philadelphia altimeter setting and increase MDA 20 feet. Helicopter visibility reduction below 1 SM NA. DME or Radar Required. Circling Rwy 25 NA at night.
⚠ MISSED APPROACH: Climbing left turn to 3000 on BSV VOR/DME R-127 to LLONG/BSV 14 DME/RADAR and hold.

AKRON-CANTON APP CON ★
125.5 371.875

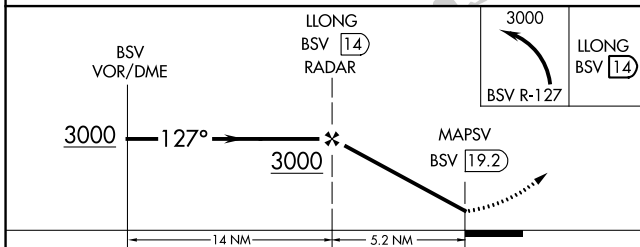
UNICOM
122.7 (CTAF) 0

DME OR RADAR REQUIRED



EC-2: 26 APR 2018 to 24 MAY 2018

EC-2: 26 APR 2018 to 24 MAY 2018



CATEGORY	A	B	C	D	FAF to MAP 5.2 NM					
	1940-1	777 (800-1)		NA	Knots	60	90	120	150	180
C CIRCLING					Min:Sec	5:12	3:28	2:36	2:05	1:44

VOR-A