

WAAS CH <b>65809</b> <b>W01A</b>	APP CRS <b>009°</b>	Rwy Idg TDZE Apt Elev	<b>4527</b> <b>588</b> <b>588</b>
--	------------------------	-----------------------------	---

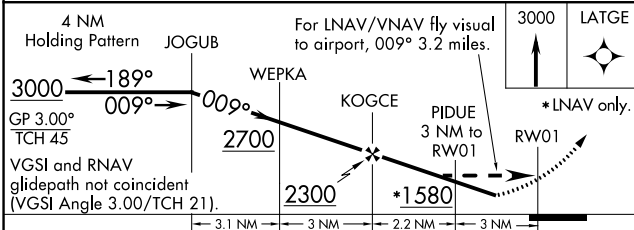
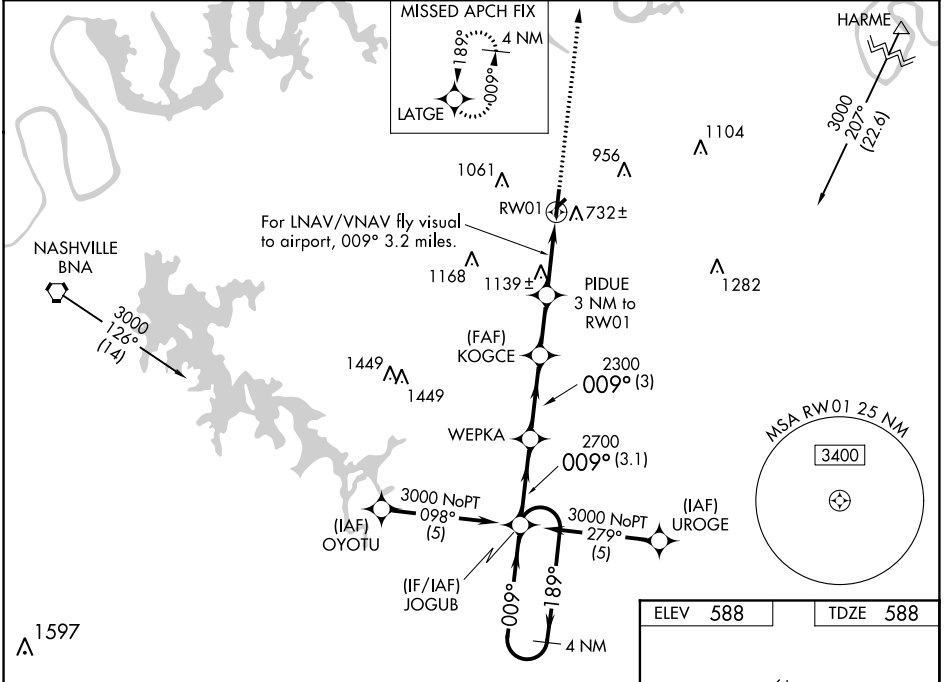
# RNAV (GPS) RWY 1

LEBANON MUNI (M54)

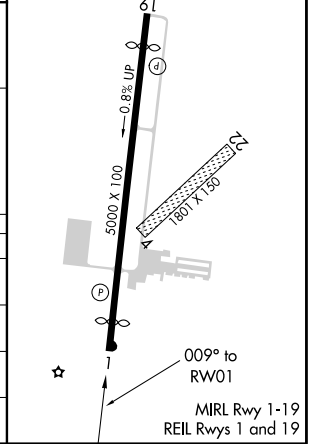
**NA** For uncompensated Baro-VNAV systems, LNAV/VNAV NA below -16° C (4° F) or above 47° C (116° F). DME/DME RNP-0.3 NA. Visibility reduction by helicopters NA. When local altimeter setting not received, use Nashville Intl altimeter setting and increase LPV DA 43 feet and all MDA 60 feet, increase LPV all Cats. visibility ¼ mile and Circling Cat. D visibility ¼ mile. LNAV/VNAV NA when using Nashville Intl altimeter setting.

**MISSED APPROACH:** Climb to 3000 direct LATGE and hold.

AWOS-3 <b>118.325</b>	NASHVILLE APP CON <b>118.4 360.7</b>	UNICOM <b>122.725 (CTAF)</b>
--------------------------	---	---------------------------------



ELEV 588	TDZE 588
----------	----------



CATEGORY	A	B	C	D
LPV DA	1088-1¼ 500 (500-1¼)			
LNAV/VNAV DA	1663-2	1075 (1100-2)	1663-3	1075 (1100-3)
LNAV MDA	1400-1 812 (900-1)	1400-1¼ 812 (900-1¼)	1400-2½ 812 (900-2½)	1400-2¾ 812 (900-2¾)
CIRCLING	1400-1 812 (900-1)	1400-1¼ 812 (900-1¼)	1400-2½ 812 (900-2½)	1440-2¾ 852 (900-2¾)

SE-1, 26 APR 2018 to 24 MAY 2018

SE-1, 26 APR 2018 to 24 MAY 2018