

WAAS CH 97441 W13A	APP CRS 126°	Rwy ldg TDZE Apt Elev	8603 7057 7095
--	------------------------	-----------------------------	---

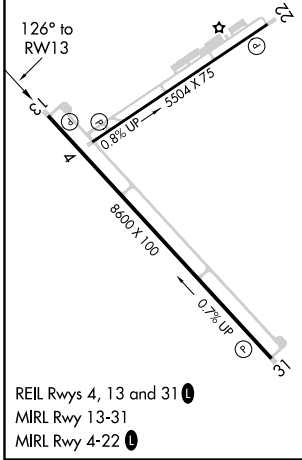
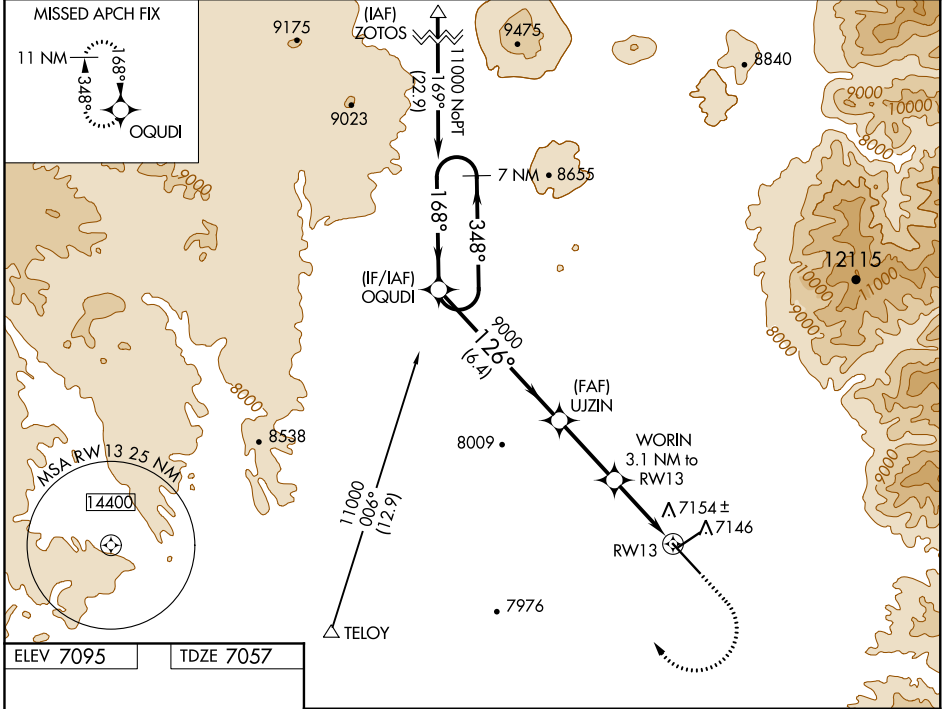
RNAV (GPS) RWY 13

TAOS RGNL (SKX)

⚠ For uncompensated Baro-VNAV systems, LNAV/VNAV NA below -29°C (-20°F) or above 47°C (118°F).
DME/DME RNP-0.3 NA.

⚠ MISSED APPROACH: (Do not exceed 250K until OQUDI)
Climb to 7800 then climbing right turn to 12400 direct OQUDI and hold, continue climb-in-hold to 12400.

AWOS-3PT 132.975	ALBUQUERQUE RADIO 122.1R	UNICOM 122.8 (CTAF) 0
----------------------------	------------------------------------	---------------------------------



	7 NM Holding Pattern	OQUDI	UJZIN	WORIN	7800	12400	OQUDI
	11000	348°	168°	126°	9000	3.1 NM to RWY13	*LNAV only.
	GP 3.00°				9000	*1.1 NM to RWY13	
	TCH 37				*8060		
		6.4 NM	2.9 NM	2 NM	1.1 NM		
CATEGORY	A	B	C	D			
LPV DA		7258- ³ / ₄	200 (200- ³ / ₄)				
LNAV/VNAV DA		7346- ⁷ / ₈	288 (300- ⁷ / ₈)				
LNAV MDA		7420-1	362 (400-1)				
C CIRCLING	7600-1 505 (600-1)	7640-1 545 (600-1)	7920-2½ 825 (900-2½)	8020-3 925 (1000-3)			

SW-1, 26 APR 2018 to 24 MAY 2018

SW-1, 26 APR 2018 to 24 MAY 2018