


LOC I-HSA 110.35	APP CRS 182°	Rwy Idg TDZE Apt Elev	8497 23 23
----------------------------	------------------------	-----------------------------	---------------------------------------

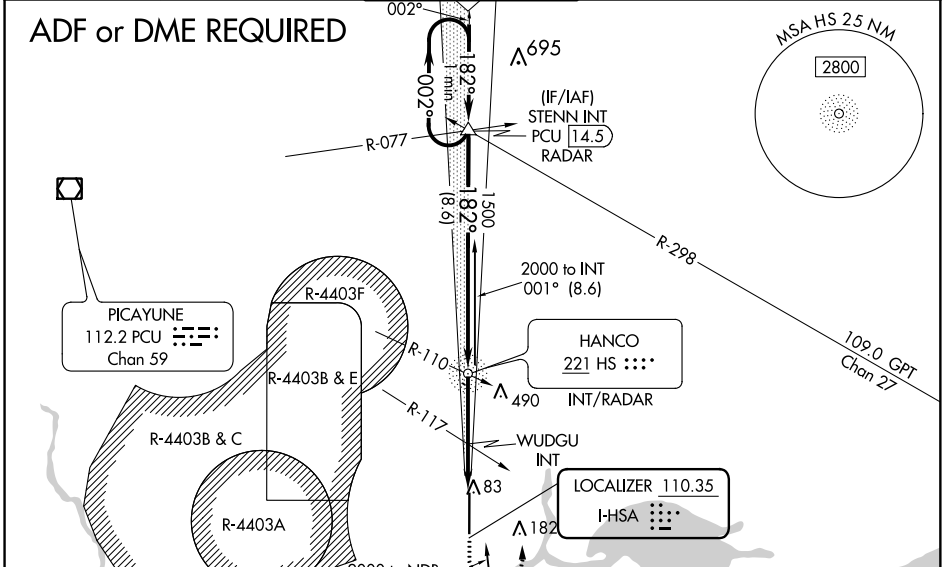
ILS Z or LOC Z RWY 18

STENNIS INTL (HSA)

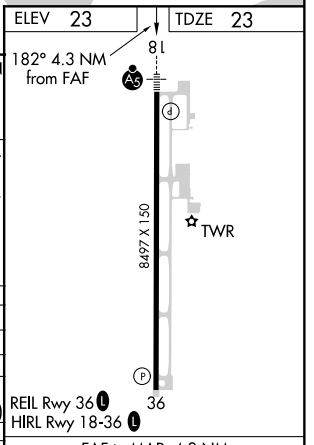
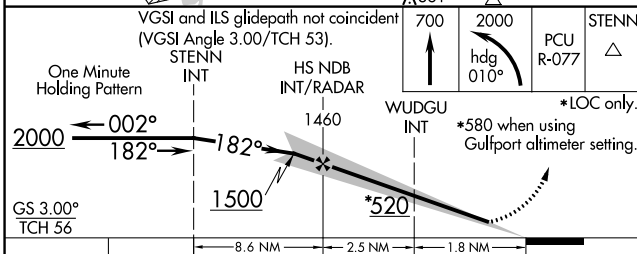
⚠ Circling NA for Cat E W of Rwy 18-36. ADF or DME required. When local altimeter setting not received, use Gulfport altimeter setting: increase DA to 270 feet; increase all MDA 60 feet and S-LOC 18 Cats C/D/E visibility 1/8 mile, Circling Cat C visibility 1/8 mile and Cats D/E visibility 1/4 mile. WUDGU FIX minimums: increase S-LOC 18 Cats C/D/E visibility 1/8 mile, and Circling Cats D/E 1/4 mile. For inop MALSRL, increase S-ILS 18 Cat E visibility to 3/4 mile, and S-LOC 18 Cats C/D/E visibility to 1 1/8 mile. WUDGU FIX minimums: increase S-LOC 18 Cats C/D/E visibility to 1 mile. For inop MALSRL when using Gulfport altimeter setting, increase S-ILS 18 Cat E visibility to 3/4 mile and S-LOC Cat E visibility to 1 1/8 mile. WUDGU FIX minimums: increase S-LOC 18 Cat E visibility to 1 1/4 mile.

MALSRL

MISSED APPROACH:
 Climb to 700 then climbing left turn to 2000 on heading 010° and on PCU VOR/DME R-077 to STENN INT and hold.

AWOS-3PT 118.375	GULFPORT APP CON* 124.6 354.1	STENNIS TOWER* 127.15 (CTAF)	GND CON 121.725	UNICOM 122.95
----------------------------	---	--	---------------------------	-------------------------



ELEV 23	TDZE 23
---------	---------



CATEGORY	A	B	C	D	E
S-ILS 18	223-1/2 200 (200-1/2)				
S-LOC 18	520-1/2	497 (500-1/2)	520-1 497 (500-1)		
CIRCLING	520-1	497 (500-1)	520-1 1/2	820-2 1/2	820-2 3/4
WUDGU FIX MINIMUMS (DUAL VOR RECEIVERS REQUIRED)					
S-LOC 18	400-1/2	377 (400-1/2)	400-5/8 377 (400-5/8)		
CIRCLING	480-1	457 (500-1)	520-1 1/2	820-2 1/2	820-2 3/4
REIL Rwy 36 36 HIRL Rwy 18-36 36					

FAF to MAP 4.3 NM					
Knots	60	90	120	150	180
Min:Sec	4:18	2:52	2:09	1:43	1:26

SC-4, 26 APR 2018 to 24 MAY 2018

SC-4, 26 APR 2018 to 24 MAY 2018