

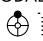
WAAS CH 61234 W23A	APP CRS 232°	Rwy Idg TDZE 1523 Apt Elev 1545	5506
--	------------------------	---	-------------

RNAV (GPS) RWY 23

SCOTT MUNI (SCX)

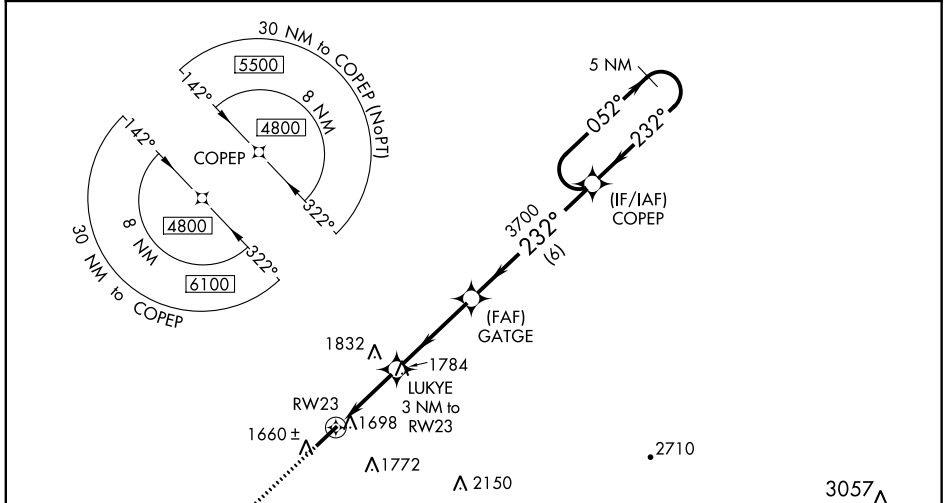
▼
▲NA


Night landing: Rwy 5 NA. For uncompensated Baro-VNAV systems, LNAV/VNAV NA below -18°C (0°F) or above 54°C (130°F). DME/DME RNP-0.3 NA. When local altimeter setting not received, use Monticello altimeter setting: increase LPV all Cats DA to 2005 feet, LNAV/VNAV all Cats DA to 2153 feet, LPV visibility ½ mile, LNAV/VNAV ⅝ mile; increase all MDA 240 feet and LNAV Cat C/D visibility ⅝ mile, Circling Cat B ¼ mile, Circling Cat C 1 mile and Circling Cat D ¾ mile. Inop table does not apply to LPV and LNAV all Cats. For inop ODALS, increase LNAV/VNAV Cat D visibility to 1⅜ mile. For inop ODALS when using Monticello altimeter setting, increase LPV all Cats visibility to 1⅝ mile, LNAV/VNAV all Cats to 2½ mile. When using Monticello altimeter setting, inop table does not apply to LNAV Cats A/C/D. VDP and Baro-VNAV NA when using Monticello altimeter setting.

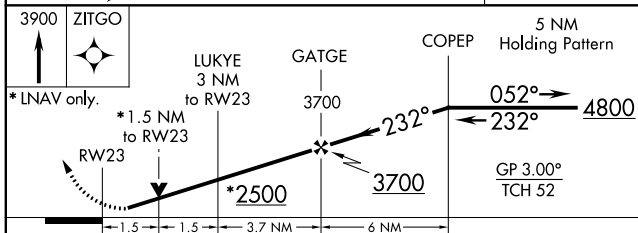
ODALS 

MISSED APPROACH:
Climb to 3900 direct ZITGO and hold.

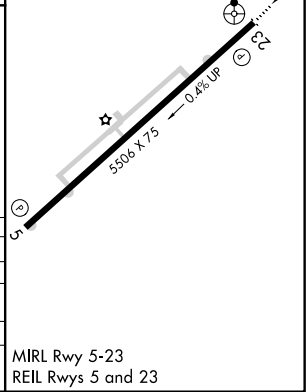
AWOS-3 135.025	INDIANAPOLIS CENTER 124.625 371.925	UNICOM 122.8 (CTAF)
--------------------------	---	-------------------------------



MISSED APCH FIX ZITGO 	ELEV 1545	TDZE 1523
---	------------------	------------------



CATEGORY	A	B	C	D
LPV DA	1773-1		250 (300-1)	
LNAV/DA VNAV	1921-1⅝		398 (400-1⅝)	
LNAV MDA	2040-1	517 (500-1)	2040-1⅝	517 (500-1⅝)
C CIRCLING	2040-1	495 (500-1)	2200-1¾	2260-2¼
			655 (700-1¾)	715 (800-2¼)



SE-1, 26 APR 2018 to 24 MAY 2018

SE-1, 26 APR 2018 to 24 MAY 2018