

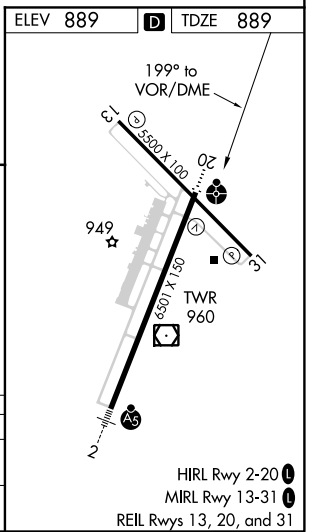
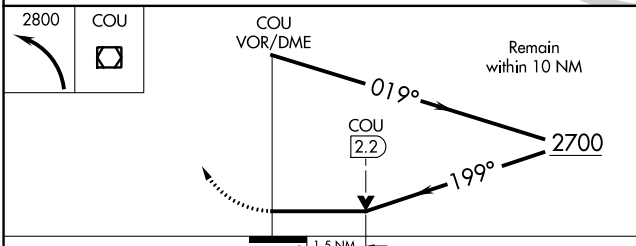
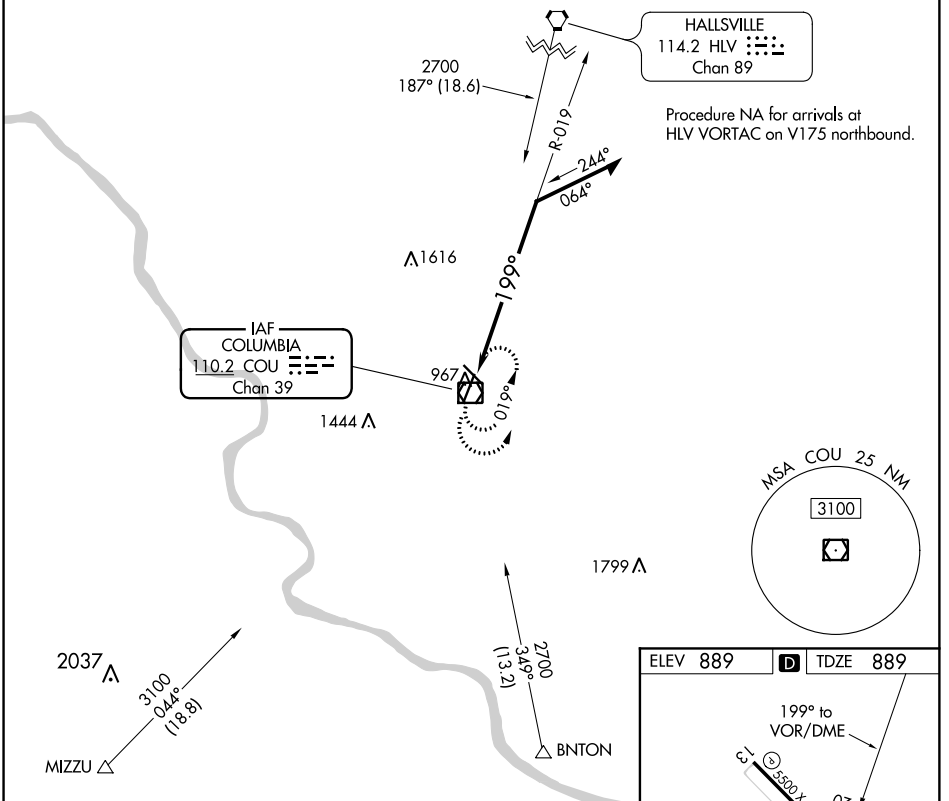
VOR/DME COU 110.2 Chan 39	APP CRS 199°	Rwy Idg TDZE Apt Elev	6501 889 889
--	------------------------	-----------------------------	---

VOR Z RWY 20

COLUMBIA RGNL (COU)

Inop table does not apply to S-20 Cats C/D. Circling NA for Cat D west of Rwy 2 and 13.	ODALS 	MISSED APPROACH: Climbing left turn to 2800 in COU VOR/DME holding pattern.
---	-----------	---

ATIS 128.45	MIZU APP CON 124.375 353.7	COLUMBIA TOWER ★ 119.3 (CTAF) 363.25	COLUMBIA RADIO 121.5 243.0 255.4	GND CON 121.6
-----------------------	--------------------------------------	--	--	-------------------------



CATEGORY	A	B	C	D
S-20	1400-3/4	511 (600-3/4)	1400-1 3/8	511 (600-1 3/8)
CIRCLING	1400-1	511 (600-1)	1400-1 1/2	1440-2
			511 (600-1 1/2)	551 (600-2)

NC-3, 26 APR 2018 to 24 MAY 2018

NC-3, 26 APR 2018 to 24 MAY 2018

HIRL Rwy 2-20
MIRL Rwy 13-31
REIL Rwy 13, 20, and 31