

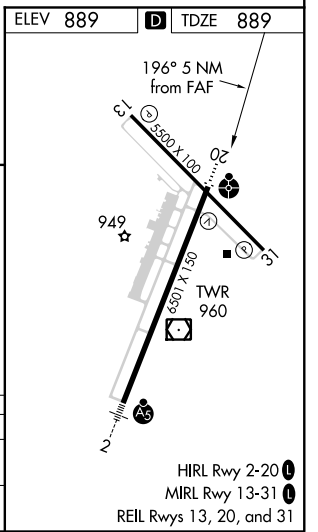
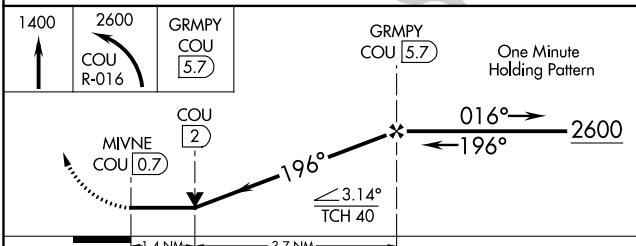
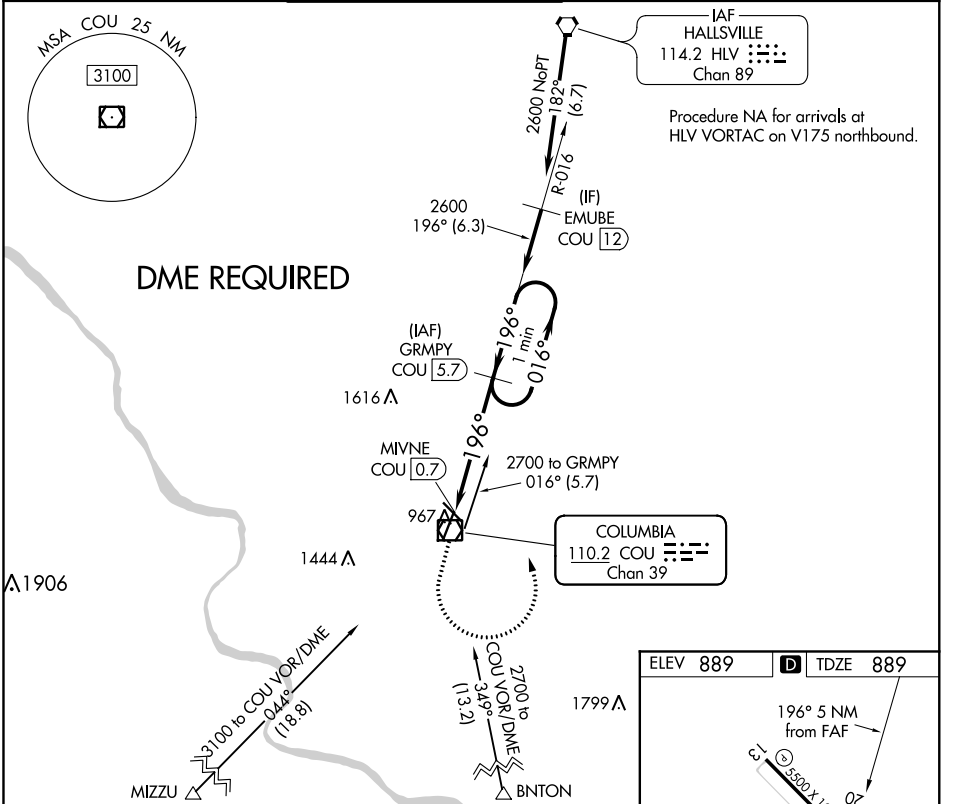
VOR/DME COU 110.2 Chan 39	APP CRS 196°	Rwy Idg TDZE Apt Elev	6501 889 889
---	------------------------	-----------------------------	---

VOR Y RWY 20

COLUMBIA RGNL (COU)

Circling NA for Cat D west of Rwy 2 and 13. DME required.	ODALS ⋮ ⊗	MISSED APPROACH: Climb to 1400 then climbing left turn to 2600 on COU VOR/DME R-016 to GRMPY/COU 5.7 DME and hold.
	ATIS 128.45	MIZZU APP CON 124.375 353.7

COLUMBIA RADIO 121.5 243.0 255.4	GND CON 121.6
--	-------------------------



CATEGORY	A	B	C	D
S-20	1360-3/4	471 (500-3/4)	1360-1 1/4	471 (500-1 1/4)
CIRCLING	1360-1	471 (500-1)	1360-1 1/2 471 (500-1 1/2)	1440-2 551 (600-2)

NC-3: 26 APR 2018 to 24 MAY 2018

NC-3: 26 APR 2018 to 24 MAY 2018