

WAAS CH <b>93599</b> <b>W20A</b>	APP CRS <b>201°</b>	Rwy Idg TDZE Apt Elev	<b>6501</b> <b>889</b> <b>889</b>
--	------------------------	-----------------------------	---

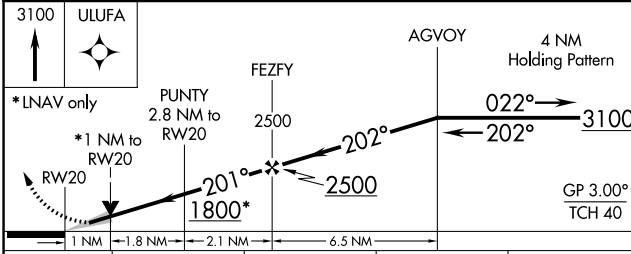
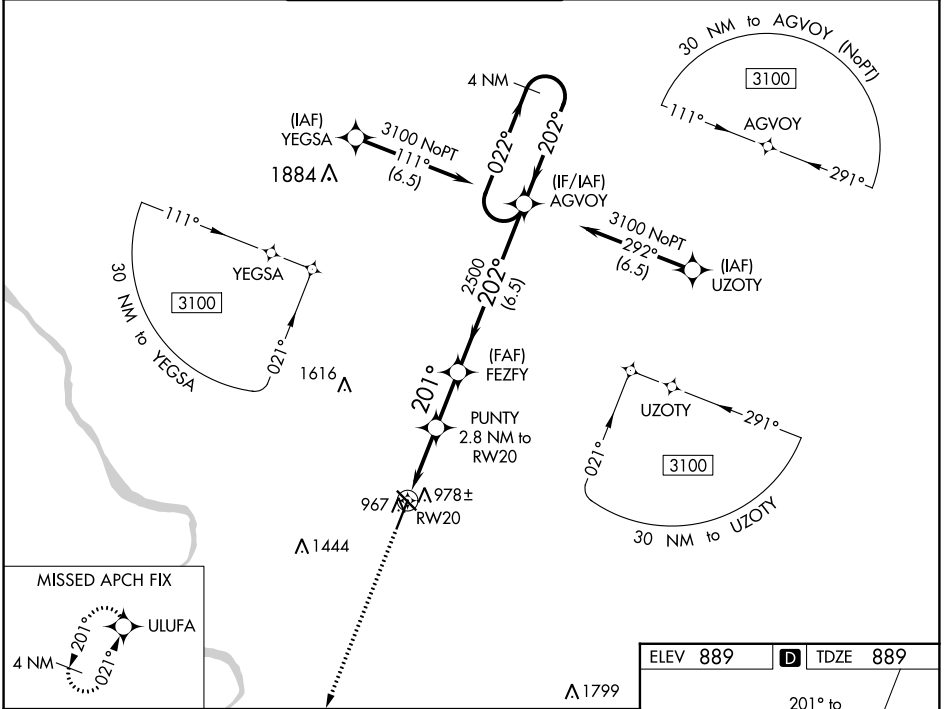
# RNAV (GPS) RWY 20

COLUMBIA RGNL (COU)

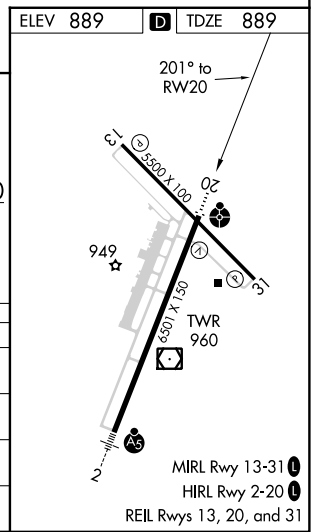
**▽** For uncompensated Baro-VNAV systems, LNAV/VNAV NA below -17°C (2°F) or above 54°C (130°F). Circling NA for Cat D west of Rwy 2 and 13.  
DME/DME RNP-0.3 NA. For inop ALS, increase Cat A/B visibility to 7/8 SM.

**ODALS**  
 MISSED APPROACH: Climb to 3100 direct ULUFA and hold.

ATIS <b>128.45</b>	MIZZU APP CON <b>124.375 353.7</b>	COLUMBIA TOWER★ <b>119.3 (CTAF) 0 363.25</b>	COLUMBIA RADIO <b>121.5 243.0 255.4</b>	GND CON <b>121.6</b>
-----------------------	---------------------------------------	---	--	-------------------------



CATEGORY	A	B	C	D
LPV DA		1139-3/4	250 (300-3/4)	
LNAV/VNAV DA		1139-3/4	250 (300-3/4)	
LNAV MDA	1240-3/4	351 (400-3/4)	1240-7/8	351 (400-7/8)
<b>C</b> CIRCLING	1300-1 411 (500-1)	1340-1 451 (500-1)	1340-1 1/2 451 (500-1 1/2)	1440-2 551 (600-2)



NC-3, 26 APR 2018 to 24 MAY 2018

NC-3, 26 APR 2018 to 24 MAY 2018