


LOC/DME I-COU 110.7 Chan 44	APP CRS 021°	Rwy Idg TDZE Apt Elev	6501 889 889
--	------------------------	-----------------------------	---

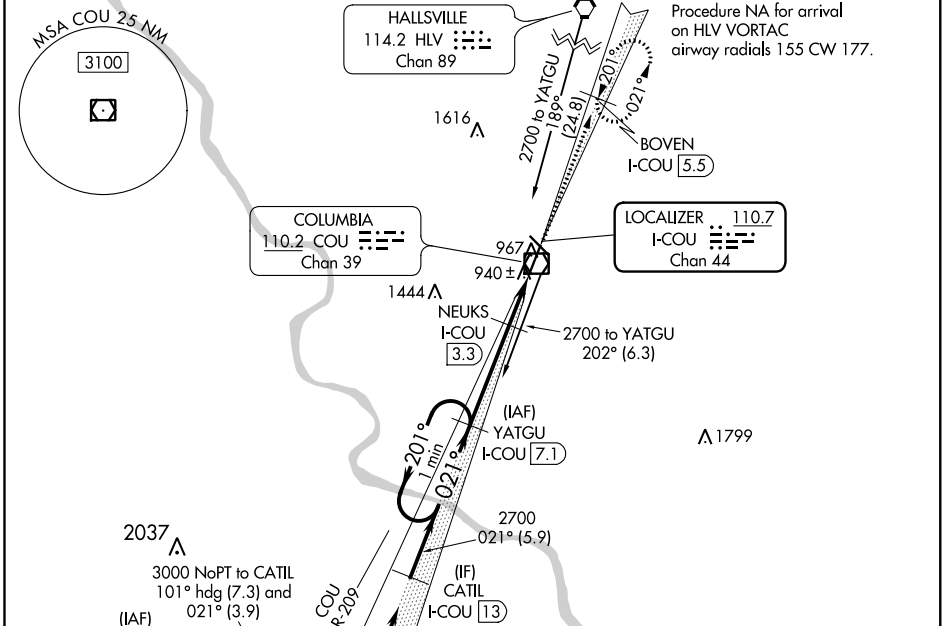
ILS or LOC RWY 2

COLUMBIA RGNL (COU)

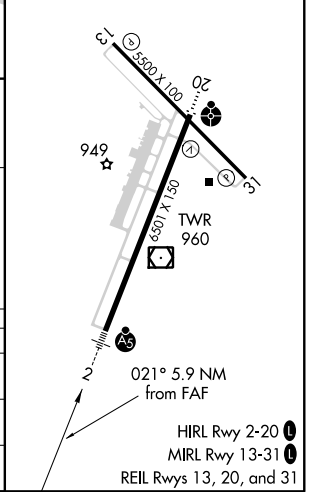
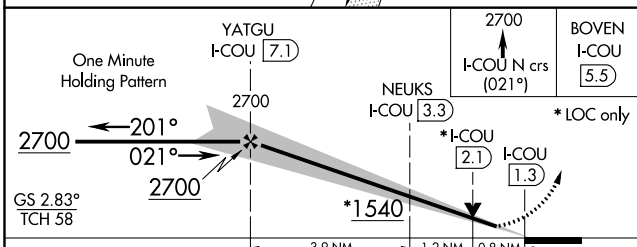
⚠ Circling NA for Cat D west of Rwy 2 and 13.
⚠ DME required.
 #RVR 1800 authorized with use of FD or AP or HUD to DA.

MALS

MISSED APPROACH: Climb to 2700 on I-COU
 localizer north course (021°) to BOVEN/I-COU 5.5
 DME and hold.

ATIS 128.45	MIZZU APP CON 124.375 353.7	COLUMBIA TOWER* 119.3 (CTAF) 0 363.25	COLUMBIA RADIO 121.5 243.0 255.4	GND CON 121.6
-----------------------	---------------------------------------	---	--	-------------------------



ELEV 889	D TDZE 889
----------	-------------------



CATEGORY	A	B	C	D
S-ILS 2#		1089/24	200 (200-½)	
S-LOC 2		1200/24	311 (400-½)	
C CIRCLING	1300-1 411 (500-1)	1340-1 451 (500-1)	1340-1½ 451 (500-1½)	1440-2 551 (600-2)

NC-3, 26 APR 2018 to 24 MAY 2018

NC-3, 26 APR 2018 to 24 MAY 2018