

VOR/DME BSV 112.4 Chan 71	APP CRS 182°	Rwy Idg TDZE Apt Elev	N/A N/A 894
---	------------------------	-----------------------------	--

VOR-A

HARRY CLEVER FIELD (PHD)

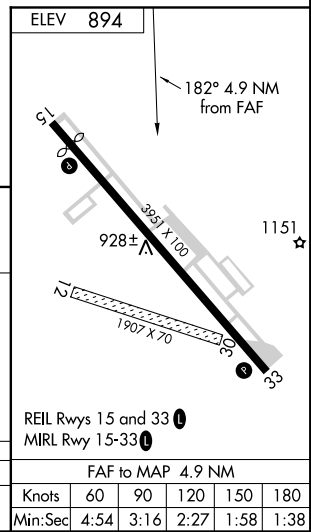
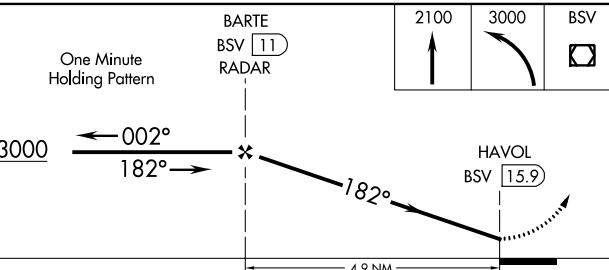
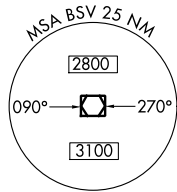
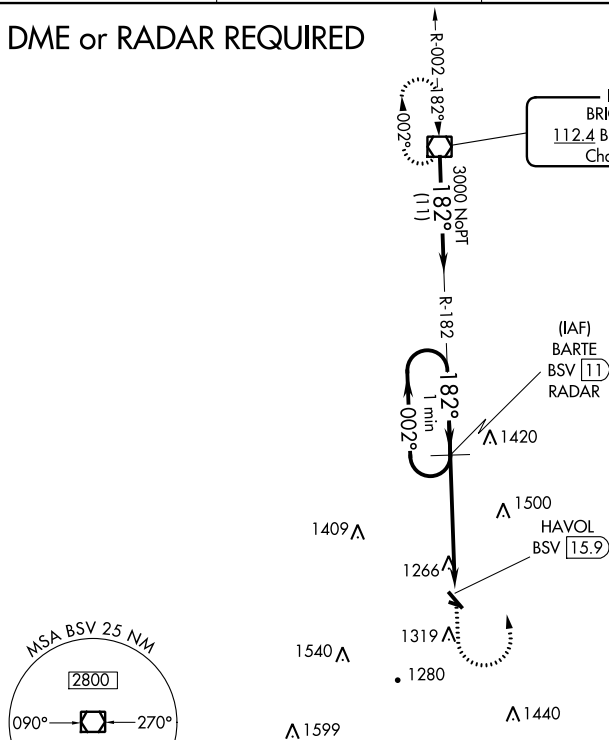
⚠ Circling NA to Rwys 12 and 30. When local altimeter setting not received, use Akron altimeter setting and increase all MDA 120 feet, increase Circling Cat C visibility ¼ mile. Rwy 15, 33 helicopter visibility reduction below 1 SM NA. Procedure NA at night.

MISSED APPROACH: Climb to 2100 then climbing left turn to 3000 direct BSV VOR/DME and hold.

ASOS 121.425	AKRON-CANTON APP CON * 125.5 371.875	UNICOM 122.8 (CTAF)	123.3 0
------------------------	--	-------------------------------	----------------

DME or RADAR REQUIRED

Δ1730



CATEGORY	A	B	C	D
CIRCLING	1720-1¼	826 (900-1¼)	1720-2½ 826 (900-2½)	NA

VOR-A

EC-2: 26 APR 2018 to 24 MAY 2018

EC-2: 26 APR 2018 to 24 MAY 2018