

WAAS CH <b>82429</b> W35A	APP CRS <b>360°</b>	Rwy Idg TDZE Apt Elev	<b>4002</b> <b>1279</b> <b>1279</b>
---------------------------------	------------------------	-----------------------------	---

# RNAV (GPS) RWY 35

CLOQUET CARLTON COUNTY (COQ)

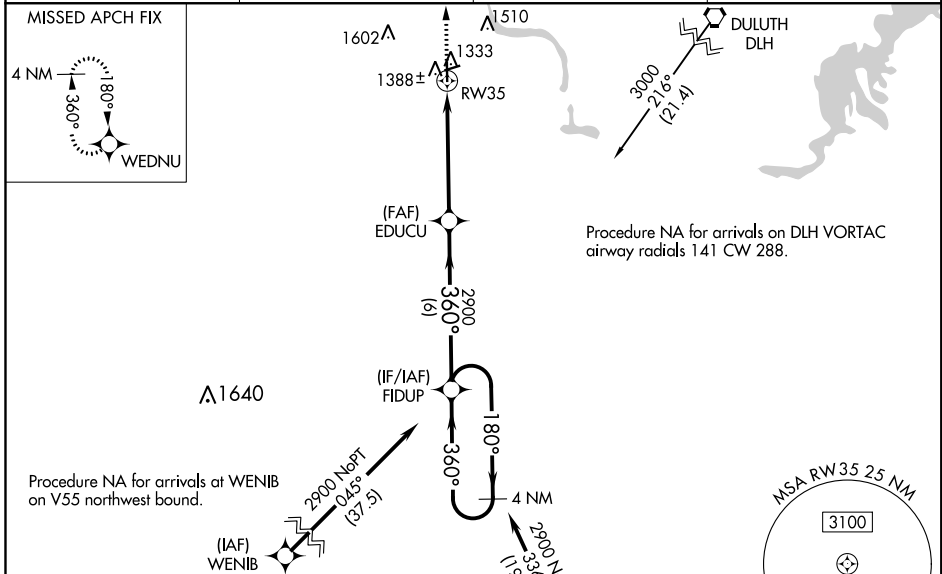
**⚠** Baro-VNAV NA when using Duluth Intl altimeter setting. For uncompensated Baro-VNAV systems, LNAV/VNAV NA below -17°C (2°F) or above 54°C (130°F). DME/DME RNP-0.3 NA. VDP NA when using Duluth Intl altimeter setting. When local altimeter setting not received, use Duluth Intl altimeter setting and increase all DA/MDA 60 feet; increase LNAV/VNAV all Cats visibility 1/8, LNAV and Circling Cat C visibility 1/4 mile. Inop table does not apply. Night landing: Rwy 7, 25 NA.

ODALS

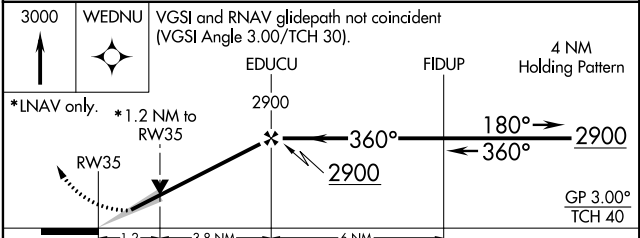
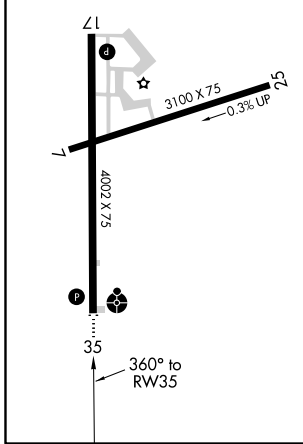


MISSED APPROACH:  
Climb to 3000 direct  
WEDNU and hold.

AWOS-3 <b>118.525</b>	DULUTH APP CON <b>125.45 233.7</b>	CLNC DEL <b>122.15</b>	UNICOM <b>122.8 (CTAF)</b> <b>0</b>
--------------------------	---------------------------------------	---------------------------	--



ELEV 1279	TDZE 1279
MIRL Rwy 7-25 and 17-35 <b>0</b>	
REIL Rwy 17 <b>0</b>	



CATEGORY	A	B	C	D
LPV DA		1529-1	250 (300-1)	NA
LNAV/VNAV DA		1545-1	266 (300-1)	NA
LNAV MDA	1680-1	401 (500-1)	1680-1/8 401 (500-1/8)	NA
CIRCLING	1700-1 421 (500-1)	1780-1 501 (600-1)	1860-1/2 581 (600-1/2)	NA

NC-1, 26 APR 2018 to 24 MAY 2018

NC-1, 26 APR 2018 to 24 MAY 2018