

NDB COQ 335	APP CRS 174°	Rwy Idg 4002
		TDZE 1279
		Apt Elev 1279

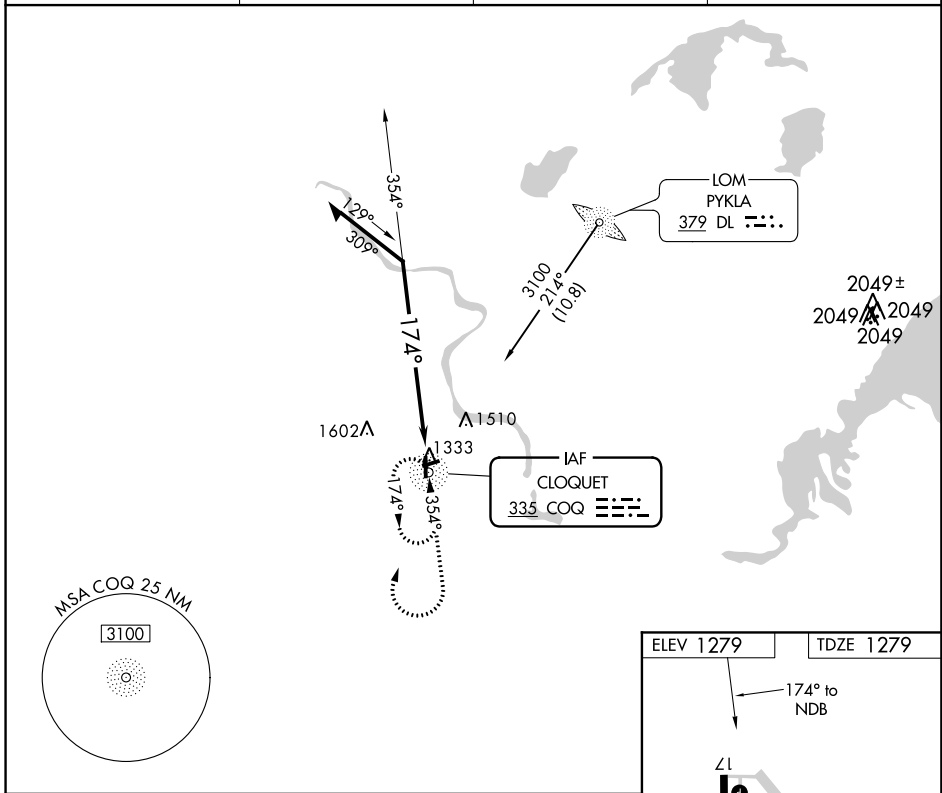
NDB RWY 17

CLOQUET CARLTON COUNTY (COQ)

⚠ Helicopter visibility reduction below 3/4 SM NA. When local altimeter setting not received, use Duluth Intl altimeter setting and increase all MDA 60 feet; increase S-17 Cat B and Circling Cat B/C visibility 1/4 mile. Night landing: Rwy 7, 25 NA.

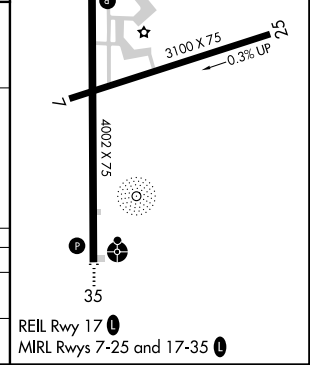
MISSED APPROACH: Climb to 2700 then climbing right turn to 3100 direct COQ NDB and hold.

AWOS-3 118.525	DULUTH APP CON 125.45 233.7	CLNC DEL 122.15	UNICOM 122.8 (CTAF)
--------------------------	---------------------------------------	---------------------------	-------------------------------



Remain within 10 NM

Diagram illustrating the 3100 ft altitude and heading changes (354° and 174°) relative to the COQ NDB.



CATEGORY	A	B	C	D
S-17	1960-1	681 (700-1)	1960-2 681 (700-2)	NA
CIRCLING	1960-1	681 (700-1)	1960-2 681 (700-2)	NA

NC-1, 26 APR 2018 to 24 MAY 2018

NC-1, 26 APR 2018 to 24 MAY 2018