

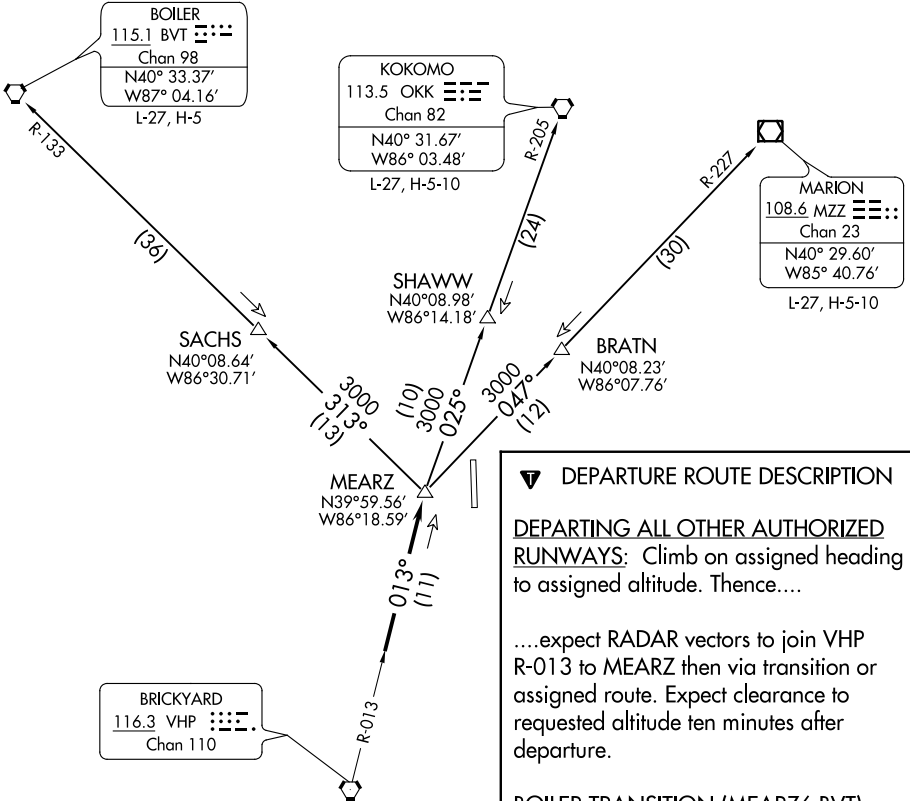
(MEARZ6.MEARZ) 18032
MEARZ SIX DEPARTURE

AL-5438 (FAA)

INDIANAPOLIS EXECUTIVE (T'Y'Q)
 INDIANAPOLIS, INDIANA

**TOP ALTITUDE:
 ASSIGNED BY ATC**

AWOS-3PT
 120.725
 INDIANAPOLIS DEP CON
 124.65 127.15 317.8



EC-2: 26 APR 2018 to 24 MAY 2018

EC-2: 26 APR 2018 to 24 MAY 2018

▼ DEPARTURE ROUTE DESCRIPTION

DEPARTING ALL OTHER AUTHORIZED RUNWAYS: Climb on assigned heading to assigned altitude. Thence....

....expect RADAR vectors to join VHP R-013 to MEARZ then via transition or assigned route. Expect clearance to requested altitude ten minutes after departure.

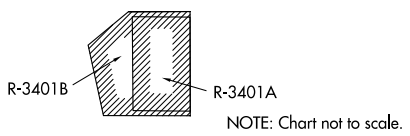
BOILER TRANSITION (MEARZ6.BVT):
 From over MEARZ via BVT R-133 to BVT VORTAC.

KOKOMO TRANSITION (MEARZ6.OKK):
 From over MEARZ via OKK R-205 to OKK VORTAC.

MARION TRANSITION (MEARZ6.MZZ):
 From over MEARZ via MZZ R-227 to MZZ VOR/DME.

TAKEOFF MINIMUMS
 Rwy 18, 36: Standard.

- NOTE: RADAR required.
- NOTE: Select appropriate localizer/DME frequency/channel prior to departure.
- NOTE: Turbojets accelerate to 250K until reaching 10000, if unable advise ATC.
- NOTE: Assigned to aircraft with a requested altitude of 11000 or above.



MEARZ SIX DEPARTURE
(MEARZ6.MEARZ) 01FEB18

INDIANAPOLIS, INDIANA
 INDIANAPOLIS EXECUTIVE (T'Y'Q)