

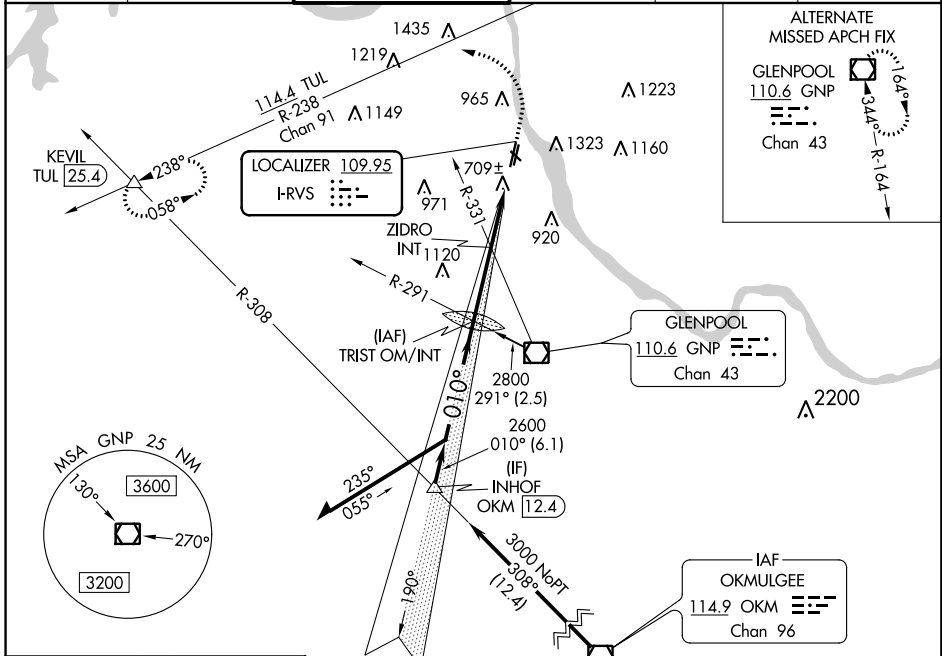
| | | | |
|---------------|-------------|--------------|-------------|
| LOC I-RVRS | APP CRS | Rwy Idg TDZE | 5102 |
| 109.95 | 010° | Apt Elev | 626 |
| | | | 638 |

ILS or LOC RWY 1L

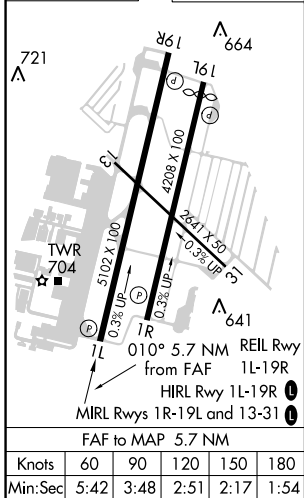
RICHARD LLOYD JONES JR (RVS)

⚠ Circling NA northeast of Rwy 31 and 19L. MISSED APPROACH: Climb to 1500 then climbing left turn to 2600 on heading 280° and TUL VORTAC R-238 to KEVIL INT/TUL 25.4 DME and hold.

| | | | | | |
|--------------|---------------|-----------------------|--------------|--------------|---------------|
| ATIS | TULSA APP CON | RIVERSIDE TOWER ★ | GND CON | CLNC DEL | UNICOM |
| 126.5 | 134.7 | 120.3 (CTAF) 0 | 121.7 | 124.5 | 122.95 |



| | | |
|----------|----------|----------|
| ELEV 638 | D | TDZE 626 |
|----------|----------|----------|



VGSI and ILS glidepath not coincident (VGSI Angle 3.00/TCH 48).
 Remain within 10 NM
 TRIST OM/INT
 *LOC only.

| | | | |
|------|------|--------|-----------|
| 2800 | 190° | 2515 | ZIDRO INT |
| 2600 | 010° | *1240 | |
| | | 2.7 NM | 3 NM |

| CATEGORY | A | B | C | D |
|--|-----------------------|-----------------------|-------------------------------|-------------------------------|
| S-ILS 1L | | 826-3/4 | 200 (200-3/4) | |
| S-LOC 1L | 1240-1 | 614 (700-1) | 1240-1 3/4 | 614 (700-1 3/4) |
| C CIRCLING | 1260-1 622 (700-1) | 1280-1 642 (700-1) | 1280-1 3/4 642 (700-1 3/4) | 1380-2 1/2 742 (800-2 1/2) |
| ZIDRO FIX MINIMUMS (DUEL VOR RECEIVERS REQUIRED) | | | | |
| S-LOC 1L | 960-1 334 (400-1) | | | |
| C CIRCLING | 1260-1 622 (700-1) | 1280-1 642 (700-1) | 1280-1 3/4 642 (700-1 3/4) | 1380-2 1/2 742 (800-2 1/2) |

SC-1, 26 APR 2018 to 24 MAY 2018

SC-1, 26 APR 2018 to 24 MAY 2018