

WAAS CH 86928 W17A	APP CRS 147°	Rwy Idg TDZE Apt Elev	3695 379 388
--	------------------------	-----------------------------	---

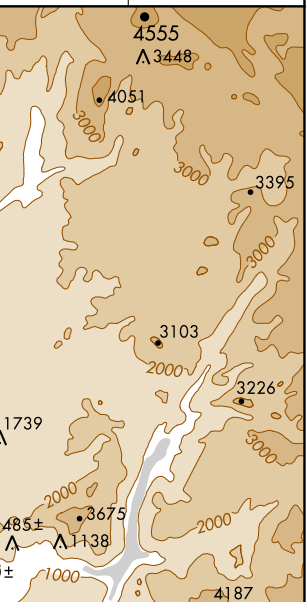
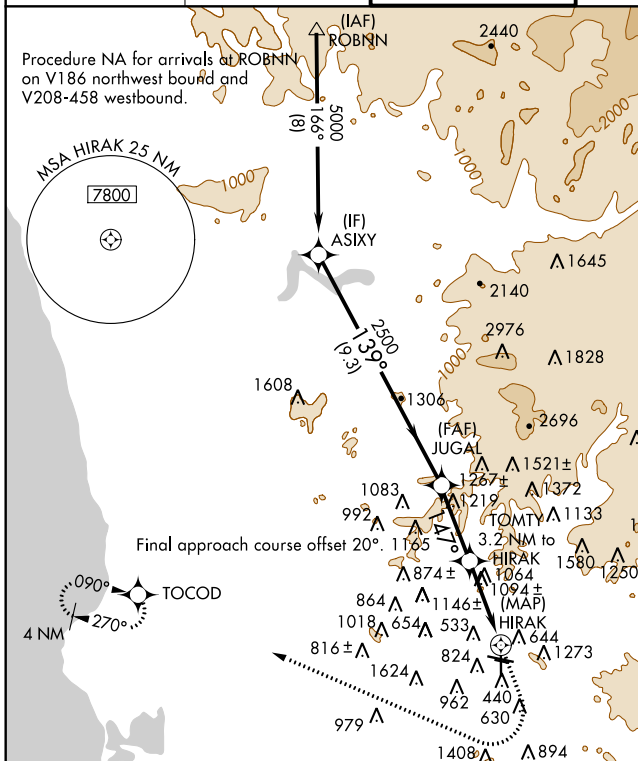
RNAV (GPS) RWY 17

GILLESPIE FIELD (SEE)

⚠ Circling NA NE of Rwy 17 and 27R. DME/DME RNP-0.3 NA. When local altimeter setting not received, use Miramar MCAS altimeter setting and increase all MDA 40 feet. Helicopter visibility reduction below 1 SM NA. Night landing: Rwy 9L, 9R, 27L, 27R, 35 NA.

MISSED APPROACH: Climb to 1500 then climbing right turn to 3000 direct TOCOD and hold.

ATIS 125.45	SOCAL APP CON 124.35 279.625	GILLESPIE TOWER* 120.7(CTAF) 257.8	GND CON 121.7	CLNC DEL 125.1
-----------------------	--	--	-------------------------	--------------------------



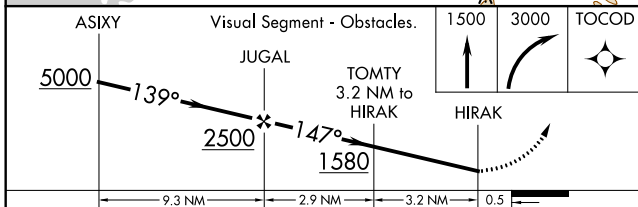
ELEV 388	TDZE 379
----------	----------

CATEGORY	A	B	C	D
LP MDA	1360-1¼ 981 (1000-1¼)	1360-1½ 981 (1000-1½)	1360-3	981 (1000-3)
LNAV MDA	1380-1¼ 1001 (1000-1¼)	1380-1½ 1001 (1000-1½)	1380-3	1001 (1000-3)
CIRCLING	1440-1¼ 1052 (1100-1¼)	1440-1½ 1052 (1100-1½)	1440-3	1052 (1100-3)

MIRL Rwy 9L-27R and 17-35
REIL Rwy 27R

SW-3, 26 APR 2018 to 24 MAY 2018

SW-3, 26 APR 2018 to 24 MAY 2018



CATEGORY	A	B	C	D
LP MDA	1360-1¼ 981 (1000-1¼)	1360-1½ 981 (1000-1½)	1360-3	981 (1000-3)
LNAV MDA	1380-1¼ 1001 (1000-1¼)	1380-1½ 1001 (1000-1½)	1380-3	1001 (1000-3)
CIRCLING	1440-1¼ 1052 (1100-1¼)	1440-1½ 1052 (1100-1½)	1440-3	1052 (1100-3)