

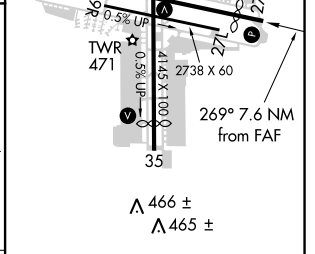
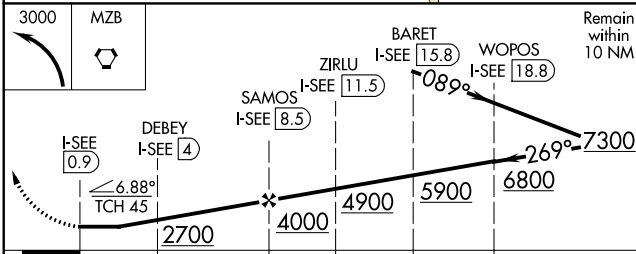
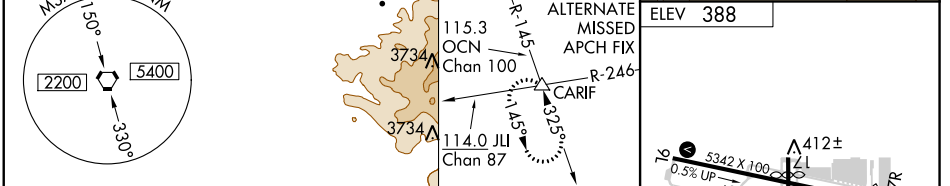
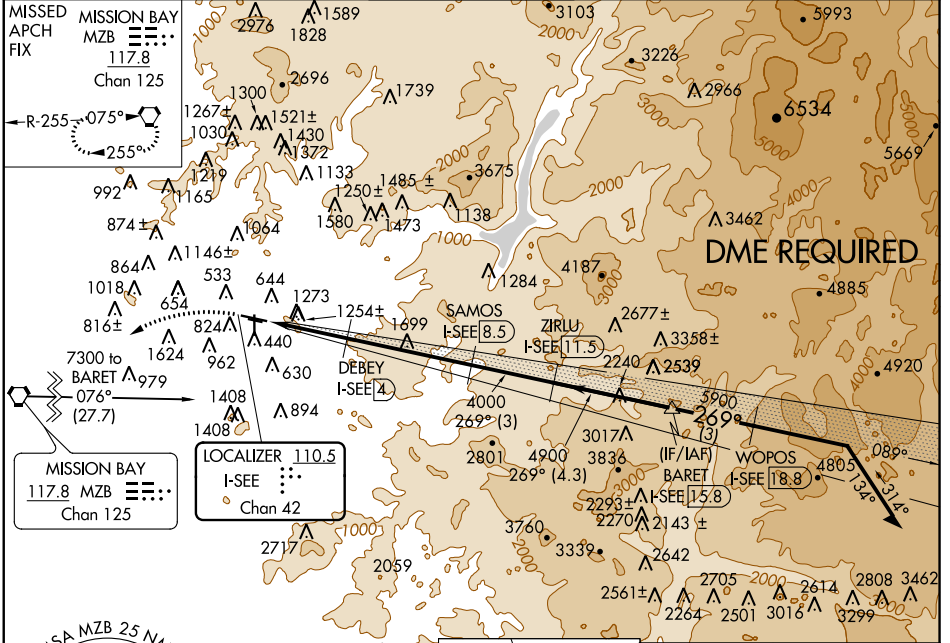
LOC/DME I-SEE <b>110.5</b> Chan <b>42</b>	APP CRS <b>269°</b>	Rwy Idg TDZE Apt Elev	<b>N/A</b> <b>N/A</b> <b>388</b>
---	------------------------	-----------------------------	--

**LOC-D**  
GILLESPIE FIELD (SE/E)

**⚠** When local altimeter setting not received, use Miramar MCAS altimeter setting and increase all MDA 40 feet. Helicopter visibility reduction below 1 SM NA. Circling NA NE of Rwy 27R-17. Night Landing: Rwy 9L, 17, 27L, 27R, 35 NA.

**⚠** MISSED APPROACH: Climbing left turn to 3000 direct to MZB VORTAC and hold.

ATIS <b>125.45</b>	SOCAL APP CON <b>124.35 279.625</b>	GILLESPIE TOWER* <b>120.7</b> (CTAF) <b>257.8</b>	GND CON <b>121.7</b>	CLNC DEL <b>125.1</b>
-----------------------	--	--	-------------------------	--------------------------



CATEGORY	A	B	C	D
<b>CIRCLING</b>	1500-1¼ 1112 (1200-1¼)	1500-1½ 1112 (1200-1½)	1920-3	1532 (1600-3)

MIRL Rwy 9L-27R and 17-35 **⚠**  
REIL Rwy 27R **⚠**

SW-3, 26 APR 2018 to 24 MAY 2018

SW-3, 26 APR 2018 to 24 MAY 2018