

WAAS CH 56333 W32A	APP CRS 323°	Rwy ldg TDZE Apt Elev	5100 608 625
--	------------------------	-----------------------------	---

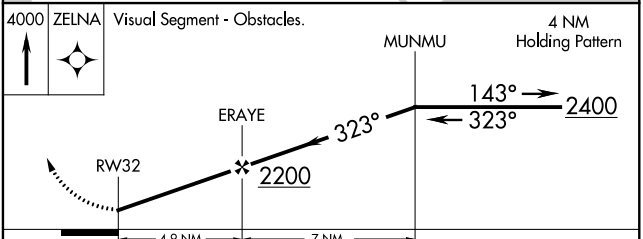
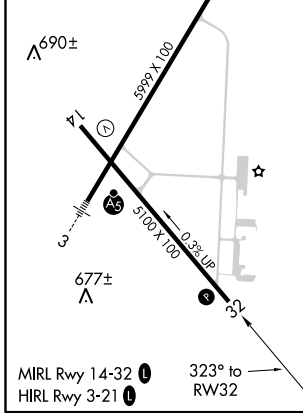
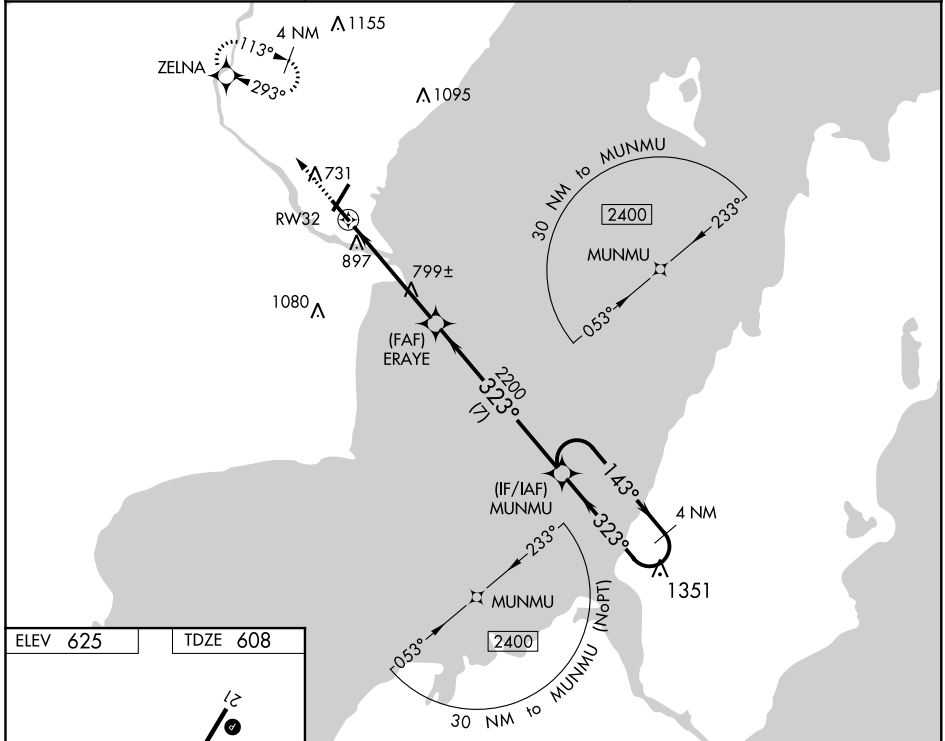
RNAV (GPS) RWY 32

MENOMINEE-MARINETTE TWIN COUNTY (MNM)

⚠ DME/DME RNP-0.3 NA. Helicopter visibility reduction below 1 SM NA. Rwy 32 Straight-in/Circling and Circling to Rwy 14 NA at night. When local altimeter setting not received, use Sturgeon Bay altimeter setting and increase all MDA 60 feet, increase LNAV Cat C/D and Circling Cat C visibility 1/8 mile, and Circling Cat D visibility 1/4 mile.

⚠ MISSED APPROACH: Climb to 4000 direct ZELNA and hold, continue to climb-in-hold to 4000.

AWOS-3PT 109.6	GREEN BAY APP CON ★ 120.3 338.2	UNICOM 122.8 (CTAF) 0
--------------------------	---	---------------------------------



CATEGORY	A	B	C	D
LP MDA	1060-1	452 (500-1)	1060-1 $\frac{3}{8}$	452 (500-1 $\frac{3}{8}$)
LNAV MDA	1160-1	552 (600-1)	1160-1 $\frac{5}{8}$	552 (600-1 $\frac{5}{8}$)
C CIRCLING	1200-1	575 (600-1)	1200-1 $\frac{5}{8}$ 575 (600-1 $\frac{5}{8}$)	1460-2 $\frac{3}{4}$ 835 (900-2 $\frac{3}{4}$)

EC-1, 26 APR 2018 to 24 MAY 2018

EC-1, 26 APR 2018 to 24 MAY 2018