

VORTAC ISO	APP CRS	Rwy Idg	<b>11500</b>
<b>109.6</b>	<b>233°</b>	THRE	<b>86</b>
Chan <b>33</b>		Apt Elev	<b>93</b>

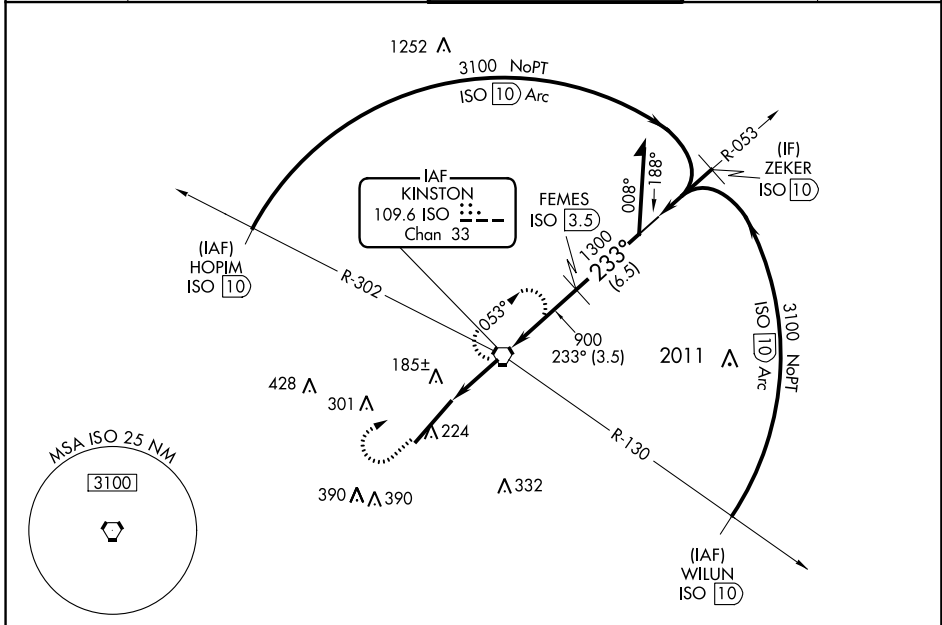
# VOR RWY 23

KINSTON RGNL JETPORT AT STALLINGS FIELD (ISO)

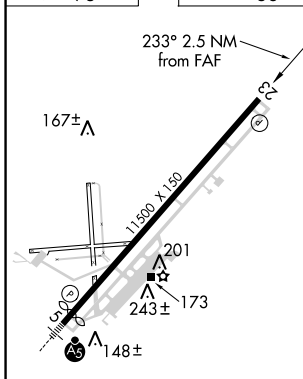
**▼** DME required. When local altimeter setting not received, use Seymour Johnson AFB altimeter setting and increase all MDA 60 feet and increase Cats C and D visibility 1/8 mile; increase Circling visibility Cat D 1/4 mile. VDP NA with Seymour Johnson AFB altimeter setting. Helicopter visibility reduction below 3/4 SM NA.

**▲** MISSED APPROACH: Climb to 1200 then climbing right turn to 2200 direct ISO VORTAC and hold.

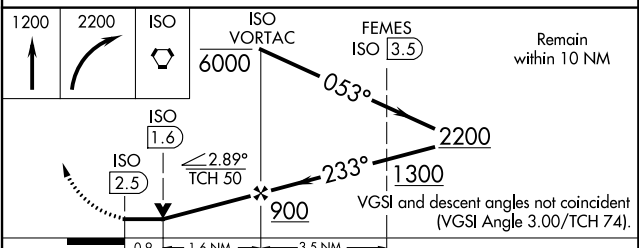
AWOS-3	SEYMOUR JOHNSON APP CON *	KINSTON TOWER *	GND CON	UNICOM
<b>132.75</b>	<b>127.3 273.6</b>	<b>120.6 (CTAF) 335.55</b>	<b>121.9</b>	<b>122.95</b>



ELEV 93	THRE 86
---------	---------



REIL Rwy 23	HIRL Rwy 5-23				
FAF to MAP 2.5 NM					
Knots	60	90	120	150	180
Min:Sec	2:30	1:40	1:15	1:00	0:50



CATEGORY	A	B	C	D
S-23	440-1	354 (400-1)		
<b>☑</b> CIRCLING	540-1 447 (500-1)	560-1 467 (500-1)	700-1 3/4 607 (700-1 3/4)	740-2 647 (700-2)

# VOR RWY 23