

WAAS CH <b>49037</b> <b>W28A</b>	APP CRS <b>282°</b>	Rwy Idg <b>4255</b> TDZE <b>46</b> Apt Elev <b>55</b>
--	------------------------	---

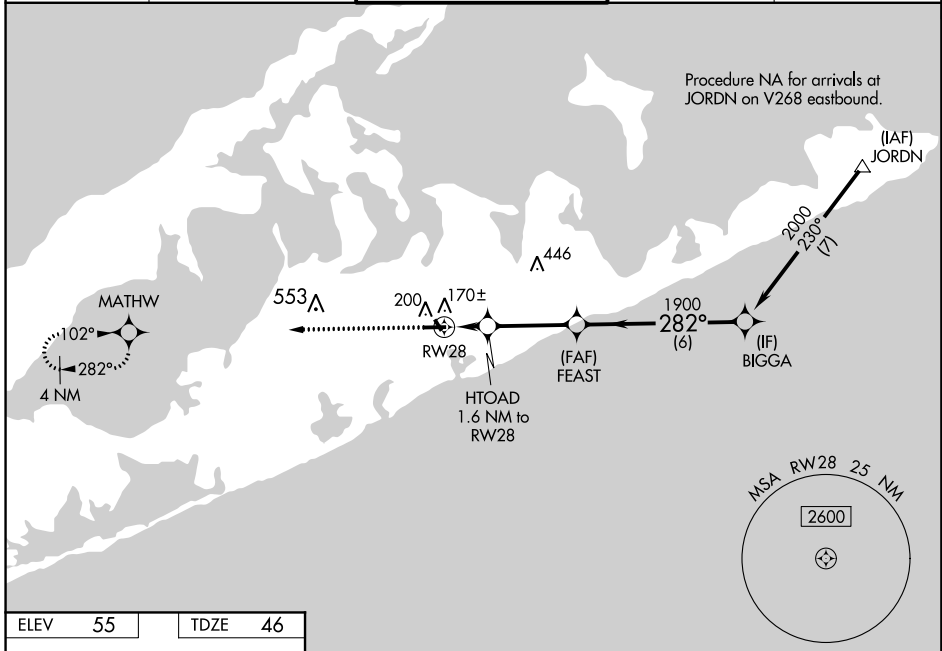
# RNAV (GPS) Z RWY 28

EAST HAMPTON (HTO)

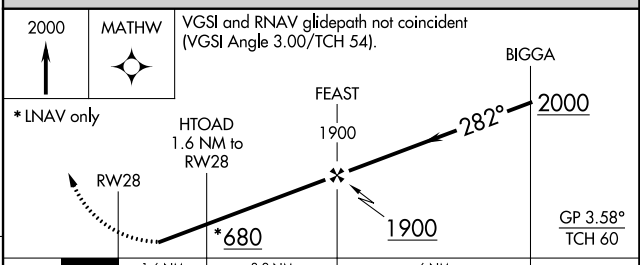
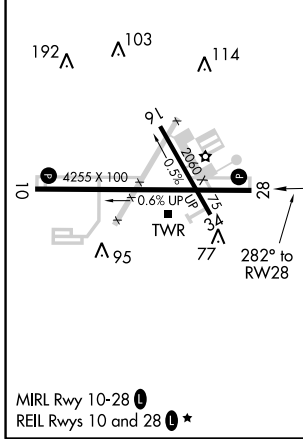
**⚠** Baro-VNAV NA when using Westhampton Beach altimeter setting. For uncompensated Baro-VNAV systems, LNAV/VNAV NA below -15°C (5°F) or above 48°C (118°F). DME/DME RNP-0.3 NA. Helicopter visibility reduction below 1 SM NA. When local altimeter setting not received, use Westhampton Beach altimeter setting and increase all DA 45 feet and all MDA 60 feet; increase LNAV Cat C and Circling Cat C visibility ¼ mile. Night landing: Rwy 10, 28 operational VGSI required, remain at or above VGSI glidepath until threshold.

**⚠** NA MISSED APPROACH: Climb to 2000 direct MATHW and hold.

AWOS-3PT <b>118.075</b>	NEW YORK APP CON <b>125.975 343.65</b>	EAST HAMPTON TOWER ★ <b>125.225 (CTAF) 0</b>	GND CON <b>121.9</b>	CLNC DEL <b>118.95</b>
----------------------------	---	---	-------------------------	---------------------------



ELEV <b>55</b>	TDZE <b>46</b>
----------------	----------------



CATEGORY	A	B	C	D
LPV DA		350-1	304 (300-1)	NA
LNAV/VNAV DA		356-1	310 (400-1)	NA
LNAV MDA		420-1	374 (400-1)	NA
CIRCLING	600-1	545 (600-1)	640-1½ 585 (600-1½)	NA