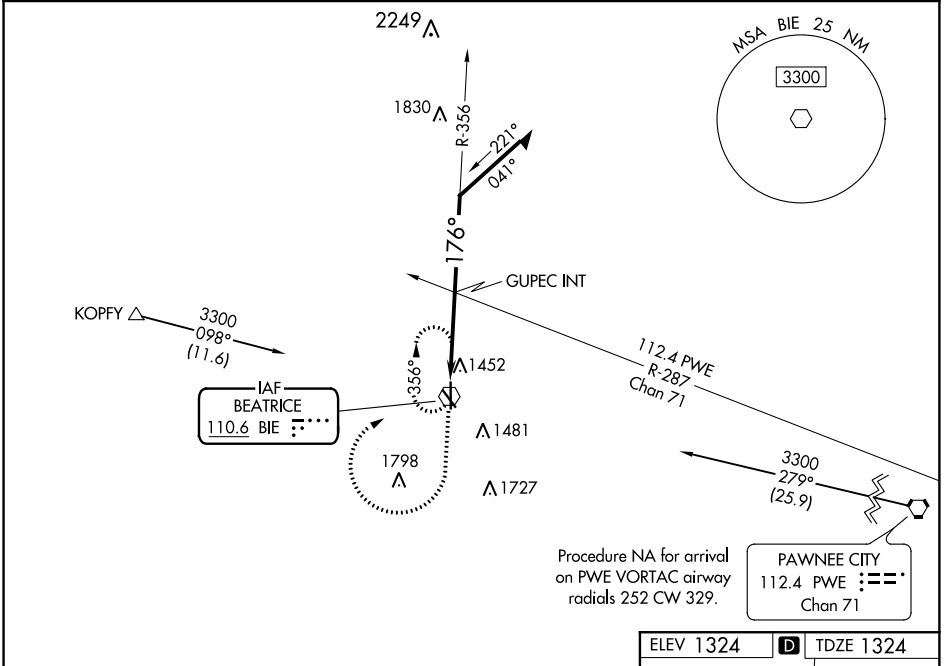


VOR BIE 110.6	APP CRS 176°	Rwy Idg TDZE Apt Elev	5602 1324 1324
-------------------------	------------------------	-----------------------------	---

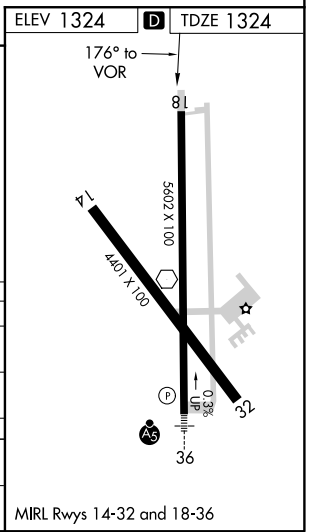
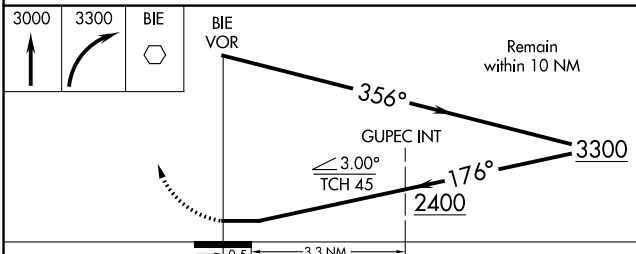
VOR RWY 18
BEATRICE MUNI (BIE)

<p>▽ ▲ Rwy 18 helicopter visibility reduction below 3/4 SM NA.</p>		<p>MISSED APPROACH: Climb to 3000 then climbing right turn to 3300 direct BIE VOR and hold.</p>	
AWOS-3 125.325	MINNEAPOLIS CENTER 126.4 317.7	COLUMBUS RADIO 122.5	UNICOM 122.8 (CTAF) 0



Procedure NA for arrival on PWE VORTAC airway radials 252 CW 329.

PAWNEE CITY
112.4 PWE ---
Chan 71



CATEGORY	A	B	C	D
S-18	2400-1¼ 1076 (1100-1¼)	2400-1½ 1076 (1100-1½)	2400-3	1076 (1100-3)
C CIRCLING	2400-1¼ 1076 (1100-1¼)	2400-1½ 1076 (1100-1½)	2400-3	1076 (1100-3)
GUPEU FIX MINIMUMS (DUAL VOR RECEIVERS REQUIRED)				
S-18	1760-1	436 (500-1)	1760-1¼	436 (500-1¼)
C CIRCLING	1820-1	496 (500-1)	2000-2 676 (700-2)	2100-2½ 776 (800-2½)

MIRL Rwy 14-32 and 18-36

NC-2, 26 APR 2018 to 24 MAY 2018

NC-2, 26 APR 2018 to 24 MAY 2018