


WAAS CH <b>61099</b> <b>W36A</b>	APP CRS <b>356°</b>	Rwy Idg TDZE <b>1307</b> Apt Elev <b>1324</b>
--	------------------------	---

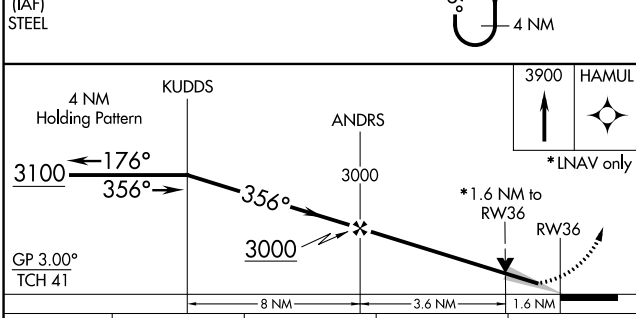
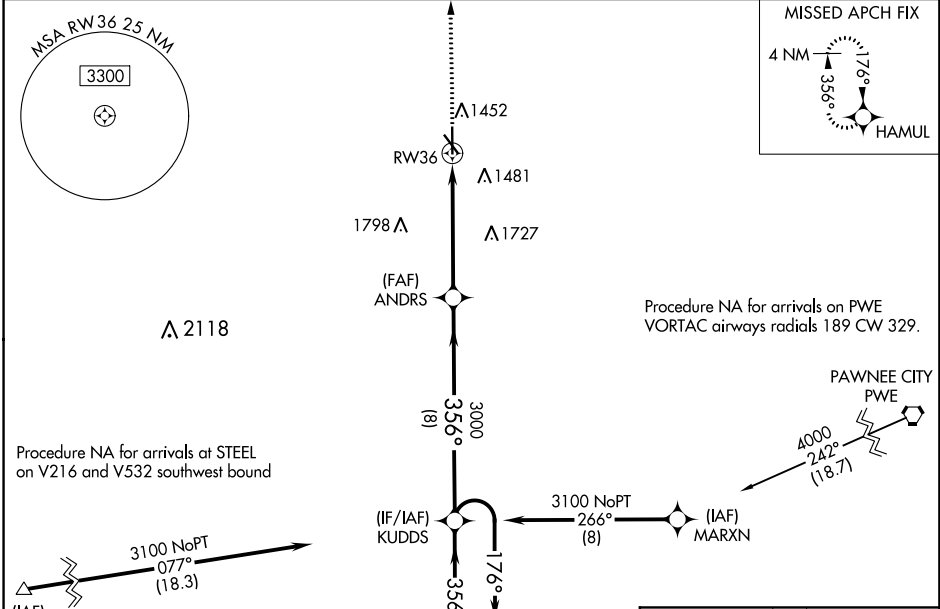
# RNAV (GPS) RWY 36

BEATRICE MUNI (BIE)

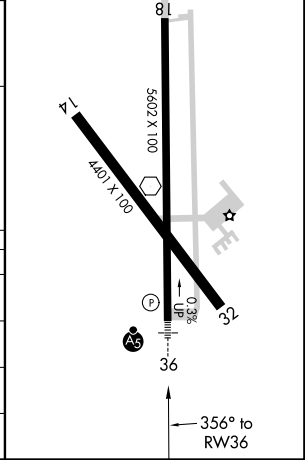
**⚠** Inoperative table does not apply to LPV all Cats. For uncompensated Baro-VNAV systems, LNAV/VNAV NA below -22°C (-7°F) or above 54°C (130°F). For inoperative MALSR, increase LNAV/VNAV all Cats visibility to 1/2 mile and LNAV Cat A/B visibility to 1. DME/DME RNP-0.3 NA.

MALSR  MISSED APPROACH: Climb to 3900 direct HAMUL and hold.

AWOS-3 <b>125.325</b>	MINNEAPOLIS CENTER <b>126.4 317.7</b>	COLUMBUS RADIO <b>122.5</b>	UNICOM <b>122.8 (CTAF)</b> 
--------------------------	--	--------------------------------	---



ELEV 1324 **D** TDZE 1307  
MIRL Rwy 14-32 and 18-36



CATEGORY	A	B	C	D
LPV DA		1507-3/4	200 (200-3/4)	
LNAV/VNAV DA		1559-3/4	252 (300-3/4)	
LNAV MDA	1840-3/4	533 (600-3/4)	1840-1	533 (600-1)
<b>C</b> CIRCLING	1840-1	516 (600-1)	2000-2 676 (700-2)	2100-2 1/2 776 (800-2 1/2)

NC-2: 26 APR 2018 to 24 MAY 2018

NC-2: 26 APR 2018 to 24 MAY 2018