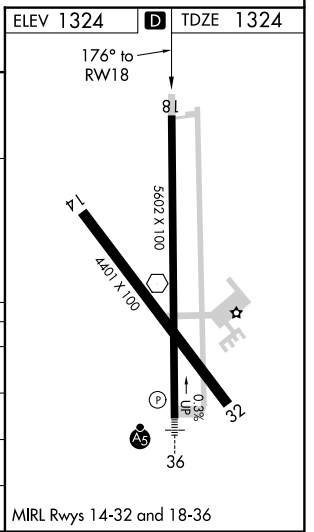
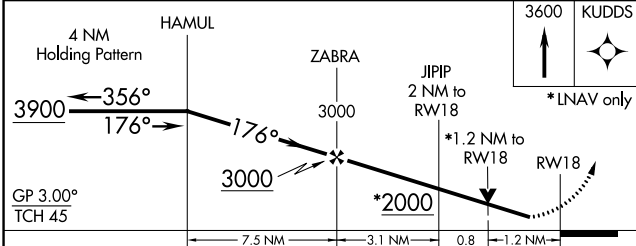
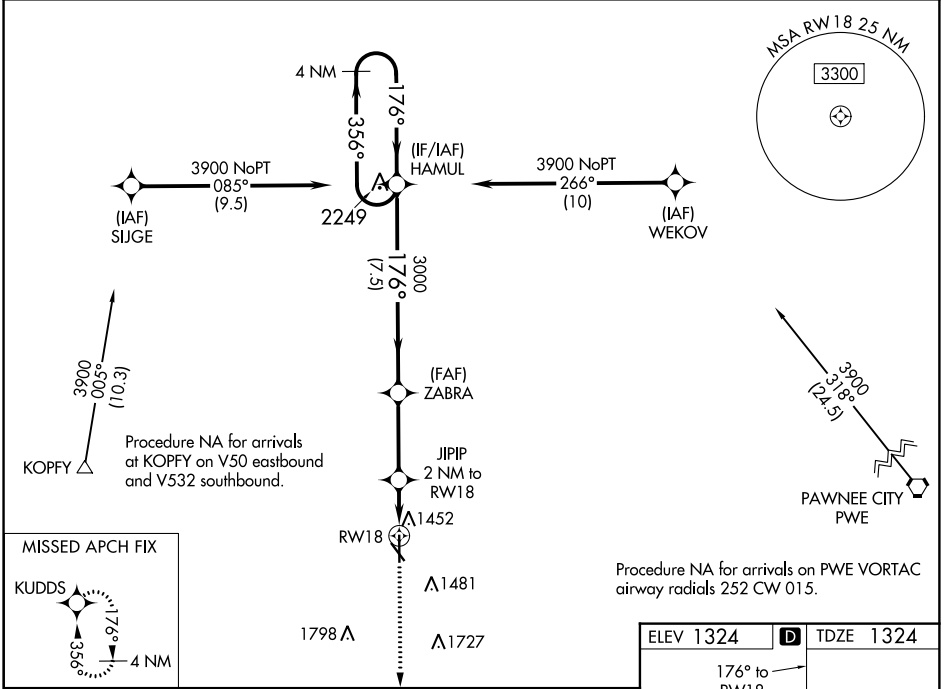


| | | | |
|--|------------------------|-----------------------------|---|
| WAAS CH 42920 W18A | APP CRS 176° | Rwy Idg TDZE Apt Elev | 5602 1324 1324 |
|--|------------------------|-----------------------------|---|

RNAV (GPS) RWY 18

BEATRICE MUNI (BIE)

| | | | |
|---|--|---|---------------------------------|
| <p>⚠ For uncompensated Baro-VNAV systems, LNAV/VNAV NA below -17°C (2°F) or above 35°C (95°F). DME/DME RNP-0.3 NA. Rwy 18 helicopter visibility reduction below ¾ SM NA.</p> | | <p>MISSED APPROACH: Climb to 3600 direct KUDDUS and hold.</p> | |
| AWOS-3 125.325 | MINNEAPOLIS CENTER 126.4 317.7 | COLUMBUS RADIO 122.5 | UNICOM 122.8 (CTAF) 0 |



| CATEGORY | A | B | C | D |
|-------------------|--------|-------------|-----------------------|-------------------------|
| LPV DA | | 1574-¾ | 250 (300-¾) | |
| LNAV/VNAV DA | | 1663-1⅛ | 339 (400-1⅛) | |
| LNAV MDA | 1760-1 | 436 (500-1) | 1760-1¼ | 436 (500-1¼) |
| C CIRCLING | 1820-1 | 496 (500-1) | 2000-2 676 (700-2) | 2100-2½ 776 (800-2½) |

NC-2: 26 APR 2018 to 24 MAY 2018

NC-2: 26 APR 2018 to 24 MAY 2018