

WAAS CH <b>69620</b> W <b>14A</b>	APP CRS <b>139°</b>	Rwy Idg TDZE Apt Elev	<b>4401</b> <b>1319</b> <b>1324</b>
---	------------------------	-----------------------------	---

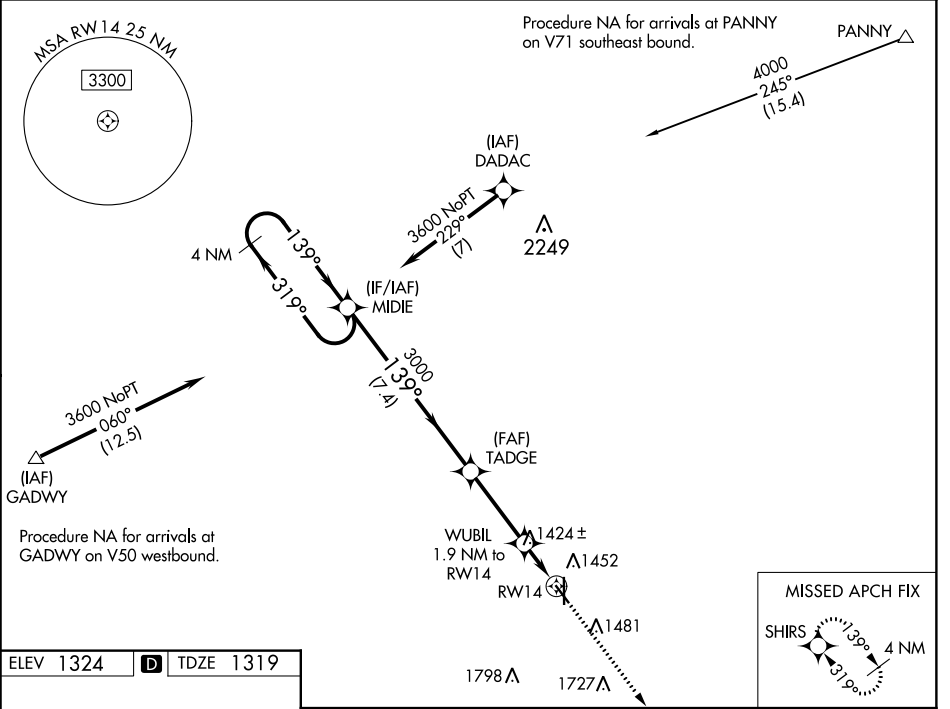
# RNAV (GPS) RWY 14

BEATRICE MUNI (BIE)

**▼** For uncompensated Baro-VNAV systems, LNAV/VNAV NA below -17°C (2°F) or above 35°C (95°F).  
**▲** DME/DME RNP-0.3 NA.

MISSED APPROACH: Climb to 3600 direct SHIRS and hold.

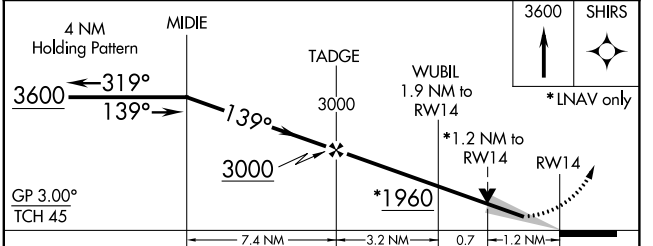
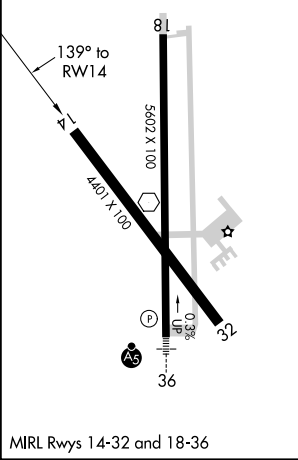
AWOS-3 <b>125.325</b>	MINNEAPOLIS CENTER <b>126.4 317.7</b>	COLUMBUS RADIO <b>122.5</b>	UNICOM <b>122.8 (CTAF) 0</b>
--------------------------	--	--------------------------------	---------------------------------



NC-2: 26 APR 2018 to 24 MAY 2018

NC-2: 26 APR 2018 to 24 MAY 2018

ELEV 1324	<b>D</b>	TDZE 1319
-----------	----------	-----------



CATEGORY	A	B	C	D
LPV DA		1569-1	250 (300-1)	
LNAV/VNAV DA		1569-1	250 (300-1)	
LNAV MDA	1760-1	441 (500-1)	1760-1 $\frac{3}{8}$	441 (500-1 $\frac{3}{8}$ )
<b>C</b> CIRCLING	1820-1	496 (500-1)	2000-2 676 (700-2)	2100-2 $\frac{1}{2}$ 776 (800-2 $\frac{1}{2}$ )