

VOR/DME ATR <b>112.6</b> Chan <b>73</b>	APP CRS <b>234°</b>	Rwy ldg <b>5331</b> TDZE <b>51</b> Apt Elev <b>50</b>
---	------------------------	---

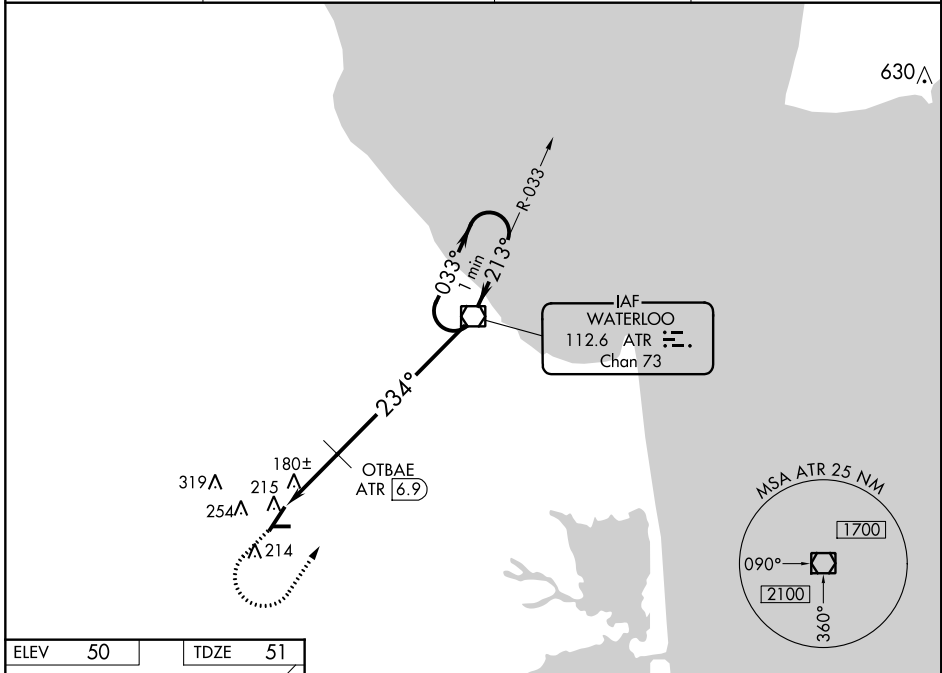
# VOR RWY 22

DELAWARE COASTAL (GED)

▼ When local altimeter setting not received, use Salisbury altimeter setting and increase all MDA 60 feet; increase S-22 and Circling Cats C/D visibility ¼ mile;  
 ▲ OTBAE fix minimums increase S-22 and Circling Cats C/D visibility ¼ mile.  
 Circling Rwy 10, 28 NA at night.

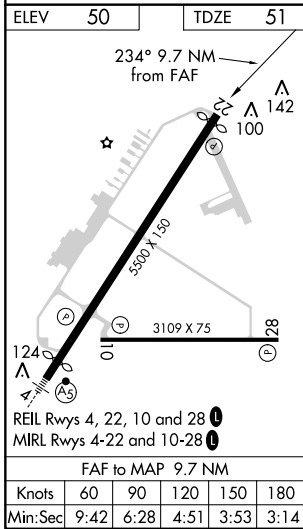
MISSED APPROACH: Climb to 800 then climbing left turn to 3000 direct ATR VOR/DME and hold.

ASOS <b>118.375</b>	DOVER APP CON <b>132.425 257.875</b>	CLNC DEL <b>125.55</b>	UNICOM <b>123.0 (CTAF) 0</b>
------------------------	---	---------------------------	---------------------------------



NE-3, 26 APR 2018 to 24 MAY 2018

NE-3, 26 APR 2018 to 24 MAY 2018



800	3000	ATR			
↑	↶	☐			
ATR 9.7	ATR 8.6	OTBAE ATR 6.9			
1.1	1.7	6.9 NM			
CATEGORY		A	B	C	D
S-22		680-1	629 (700-1)	680-1¾	629 (700-1¾)
CIRCLING		680-1	630 (700-1)	720-1¾ 670 (700-1¾)	720-2 670 (700-2)
OTBAE FIX MINIMUMS					
S-22		440-1	389 (400-1)	440-1½	389 (400-1½)
CIRCLING		560-1 510 (600-1)	580-1 530 (600-1)	720-1¾ 670 (700-1¾)	720-2 670 (700-2)

ATR VOR/DME One Minute Holding Pattern

033° → 3000  
 ← 213°

\* 740 when using Salisbury altimeter setting.