

WAAS CH 97720 W05A	APP CRS 049°	Rwy Idg 5998 TDZE 184 Apt Elev 187
--	------------------------	---

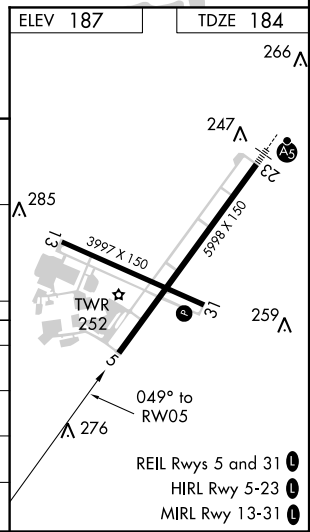
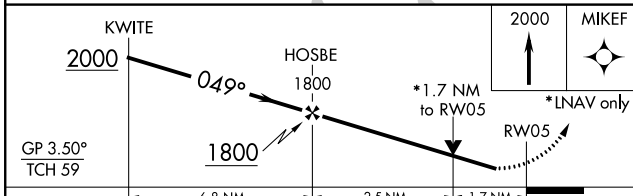
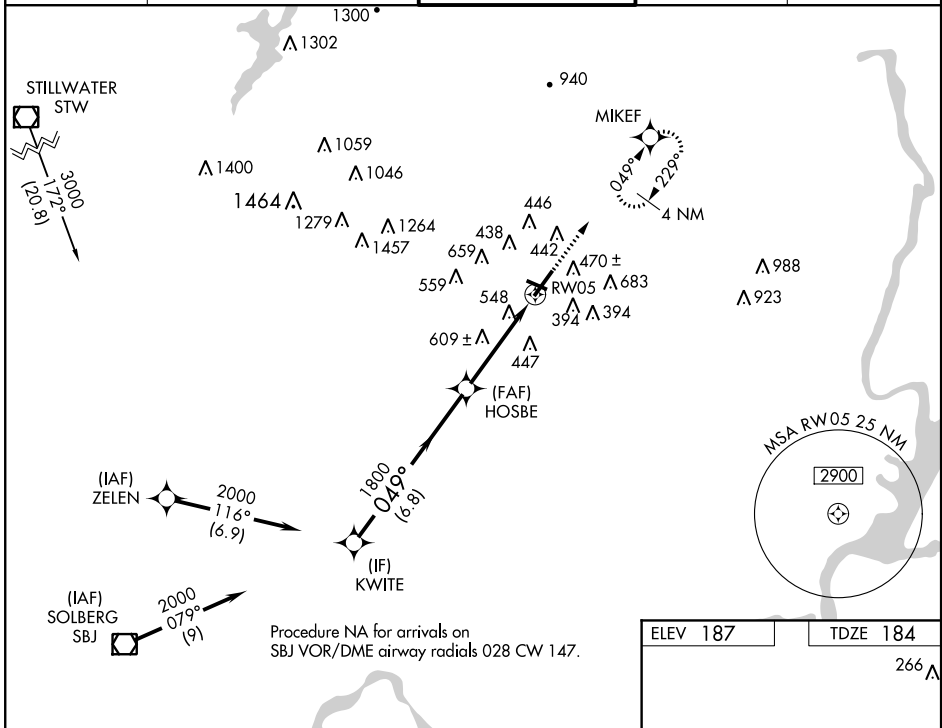
RNAV (GPS) RWY 5

MORRISTOWN MUNI (MMU)

⚠ Circling to Rwy 13-31 NA at night. VDP and Baro-VNAV NA when using Newark altimeter setting. For uncompensated Baro-VNAV systems, LNAV/VNAV NA below -15°C (5°F) or above 54°C (130°F). DME/DME RNP-0.3 NA. Visibility reduction by helicopters NA. When local altimeter setting not received, use Newark altimeter setting and increase all DA 54 feet and all MDA 60 feet. Increase LPV all Cats and LNAV C/D visibility 1/8 mile. Increase LNAV/VNAV all Cats and Circling Cat C visibility 1/4 mile.

⚠ MISSED APPROACH: Climb to 2000 direct MIKEF and hold.

ATIS 124.25	NEW YORK APP CON 127.6 379.9	MORRISTOWN TOWER* 118.1 (CTAF) 353.9	GND CON 134.2	CLNC DEL 128.6
-----------------------	--	---	-------------------------	--------------------------



CATEGORY	A	B	C	D
LPV DA	818-1 7/8	634 (700-1 7/8)		NA
LNAV/VNAV DA	896-2 1/4	712 (800-2 1/4)		NA
LNAV MDA	860-1	676 (700-1)	860-1 7/8	676 (700-1 7/8)
CIRCLING	900-1	713 (800-1)	900-2 713 (800-2)	1000-2 3/4 813 (900-2 3/4)

NE-2, 26 APR 2018 to 24 MAY 2018

NE-2, 26 APR 2018 to 24 MAY 2018