


LOC I-MMU	APP CRS	Rwy Idg	5998
110.3	229°	TDZE	183
		Apt Elev	187

ILS or LOC RWY 23

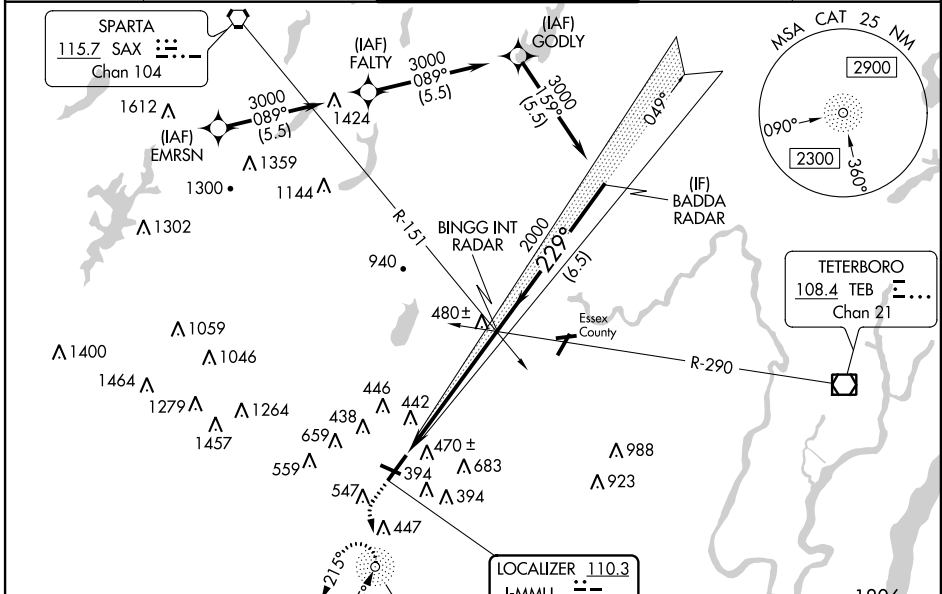
MORRISTOWN MUNI (MMU)

When local altimeter setting not received, use Newark Liberty Intl altimeter setting and increase all DA 54 feet and all MDA 60 feet; increase S-LOC 23 Cat C and D visibility ½ mile. Autopilot coupled approach NA below 732. ADF required. Rwy 23 helicopter visibility reduction below 1 SM NA. Rwy 13, 31 helicopter visibility reduction below 1 SM NA. Circling Rwy 13, 31 NA at night. For inop ALS, increase S-LOC 23 Cat A/B visibility to 1 SM. For inop ALS when using Newark Liberty Intl altimeter setting, increase S-ILS 23 all Cats visibility to 1½ SM, and S-LOC 23 Cat A/B to 1 SM, and Cat C/D to 1¾ SM.

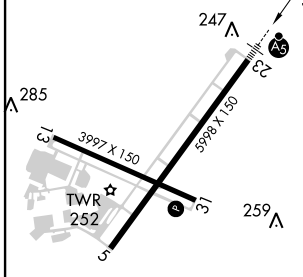
MALSR


MISSED APPROACH:
 Climb to 700 then climbing left turn to 2000 direct CAT NDB and hold, continue climb-in-hold to 2000.

ATIS	NEW YORK APP CON	MORRISTOWN TOWER ★	GND CON	CLNC DEL
124.25	127.6 379.9	118.10 (CTAF) 353.9	134.2	128.6



ELEV 187	TDZE 183
229° 5.5 NM from FAF	266 A
247 A	259 A



GPS or RADAR REQUIRED





700 2000 CAT

BINGG INT RADAR BADA RADAR

2000 229° 3000

2000

GS 3.00° TCH 55

FAF to MAP 5.5 NM	Knots			
	60	90	120	150
Min:Sec	5:30	3:40	2:45	2:12
	180			
	1:50			
REIL Rwys 5 and 31				
HIRL Rwy 5-23				
MIRL Rwy 13-31				
CIRCLING				
CATEGORY	A	B	C	D
S-ILS 23	488-1 305 (400-1)			
S-LOC 23	740-1	557 (600-1)	740-1½	557 (600-1½)
CIRCLING	860-1 673 (700-1)	900-1 713 (800-1)	1000-2½ 813 (900-2½)	1200-3 1013 (1100-3)

NE-2, 26 APR 2018 to 24 MAY 2018

NE-2, 26 APR 2018 to 24 MAY 2018