

WILKES-BARRE FOUR ARRIVAL

TETERBORO, NEW JERSEY

NE-2, 26 APR 2018 to 24 MAY 2018

NEW YORK APP CON
127.6 379.9
NEWARK D-ATIS
115.7

JAMESTOWN
114.7 JHW
Chan 94
N42°11.32'-W79°07.28'
L-30, H-10

DMACK
N41°47.15'
W77°33.12'

L70-108
FL180
115°
(60)

HOXIE
N41°51.90'
W77°51.16'

SLATE RUN
113.9 SIT
Chan 86

STENT
N41°40.74'
W77°09.17'

HARTY
N41°04.27'
W75°05.39'

ALLENTOWN
117.5 FIC
Chan 122

MUGZY
N41°01.81'
W74°58.16'
Expect 6000

WILKES-BARRE
111.6 LVZ
Chan 53
N41°16.37'-W75°41.37'
Expect FL180

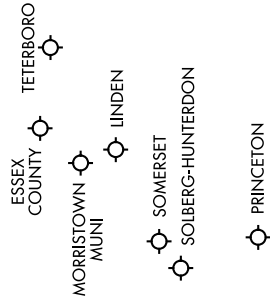
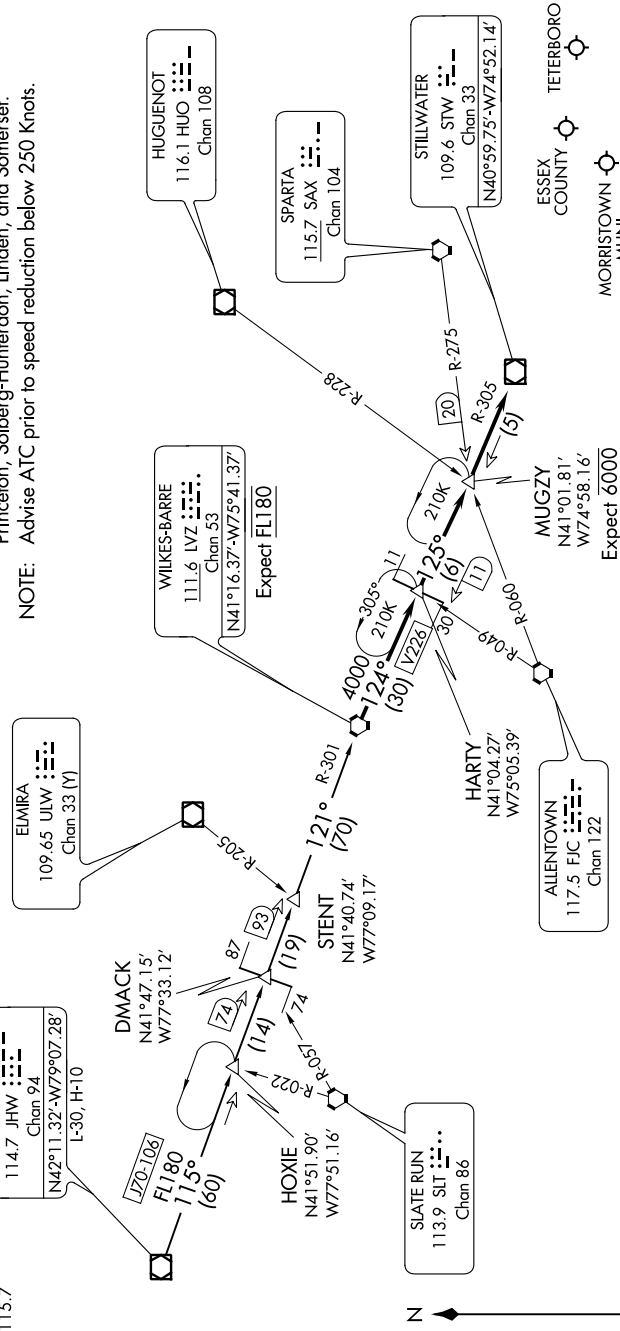
ELMIRA
109.65 ULW
Chan 33 (Y)

SPARTA
115.7 SAX
Chan 104

STILLWATER
109.6 STW
Chan 33
N40°59.75'-W74°52.14'

HUGUENOT
116.1 HUO
Chan 108

NOTE: This STAR applicable to all aircraft capable of 250 KIAS or greater landing at Teterboro, Morristown Muni, Essex County, Princeton, Solberg-Hunterdon, Linden, and Somerset.
NOTE: Advise ATC prior to speed reduction below 250 Knots.



NOTE: Chart not to scale.

ARRIVAL ROUTE DESCRIPTION
JAMESTOWN TRANSITION (JHW.LVZ4): From over JHW VOR/DME on JHW R-115 and LVZ R-301 to LVZ VORTAC. Thence
from over LVZ VORTAC, on LVZ R-124 and STW R-305 to STW VOR/DME. Expect radar vectors to final approach course.

WILKES-BARRE FOUR ARRIVAL

TETERBORO, NEW JERSEY

NE-2, 26 APR 2018 to 24 MAY 2018