

WAAS CH 60932 W19A	APP CRS 188°	Rwy Idg TDZE Apt Elev	4529 106 107
---------------------------------	------------------------	-----------------------------	---

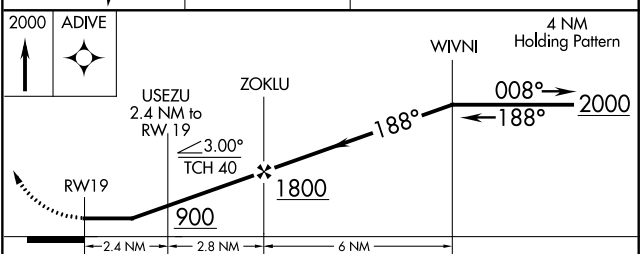
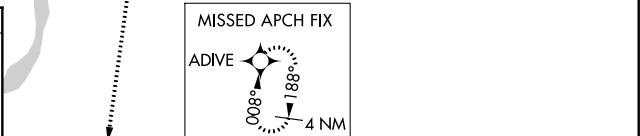
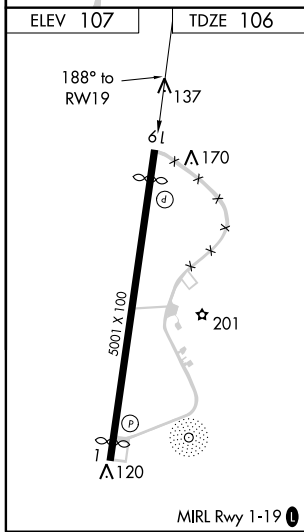
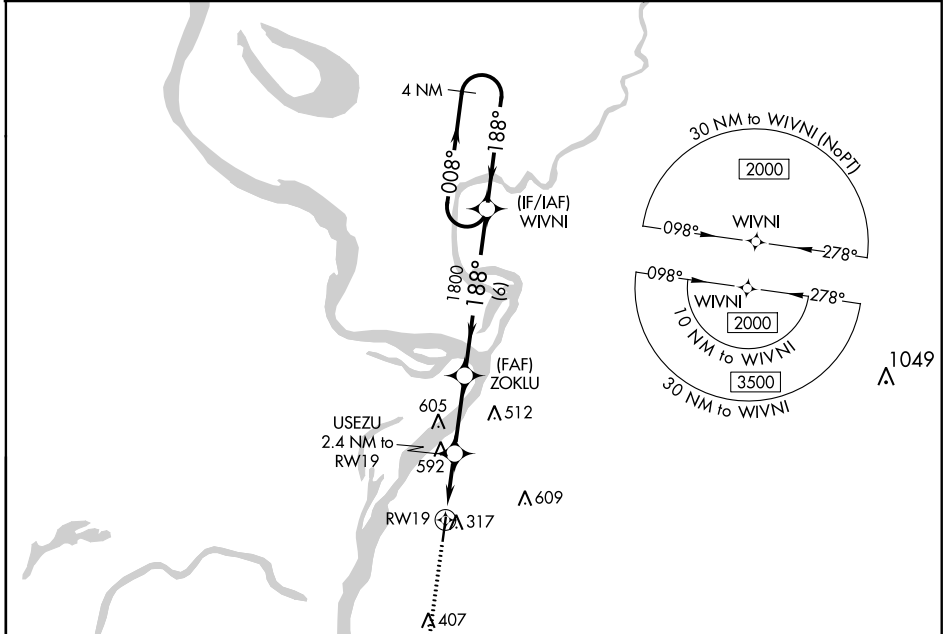
RNAV (GPS) RWY 19

VICKSBURG MUNI (VKS)

⚠ Circling NA for Cat D west of Rwy 1-19. DME/DME RNP-0.3 NA. When local altimeter setting not received, use Vicksburg Tallulah Rgnl altimeter setting and increase all MDA 40 feet, increase LP Cat C/D visibility 1/8 mile and LNAV Cat C/D 1/2 mile and Circling Cat C 1/4 mile. Procedure NA at night. Helicopter visibility reduction below 1 SM not authorized.

MISSED APPROACH:
Climb to 2000 direct ADIVE and hold.

AWOS-3 118.85	MEMPHIS CENTER 132.5 259.1	UNICOM 122.8 (CTAF) 📻
-------------------------	--------------------------------------	--



CATEGORY	A	B	C	D
LP MDA	660-1	554 (600-1)	660-1 ³ / ₈	554 (600-1 ³ / ₈)
LNAV MDA	860-1 754 (800-1)	860-1 ¹ / ₄ 754 (800-1 ¹ / ₄)	860-2	754 (800-2)
CIRCLING	860-1 753 (800-1)	860-1 ¹ / ₄ 753 (800-1 ¹ / ₄)	860-2 ¹ / ₄ 753 (800-2 ¹ / ₄)	860-2 ¹ / ₂ 753 (800-2 ¹ / ₂)

SC-4, 26 APR 2018 to 24 MAY 2018

SC-4, 26 APR 2018 to 24 MAY 2018