

# RNAV (GPS) RWY 22

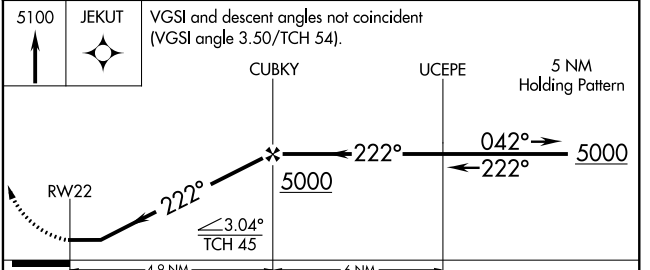
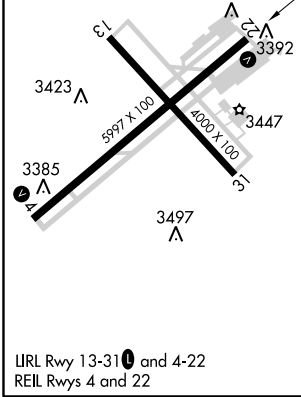
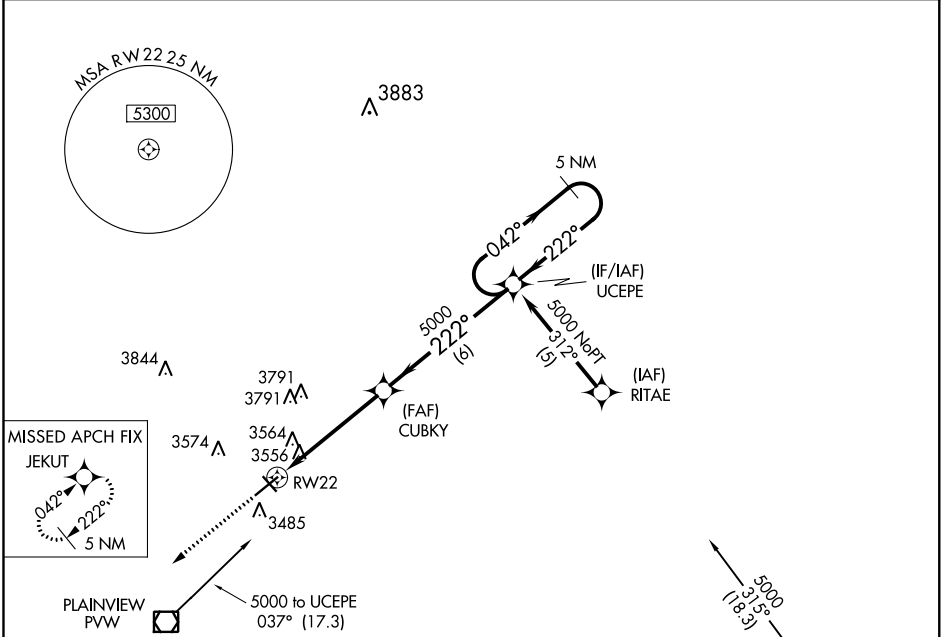
HALE COUNTY (PVW)

APP CRS <b>222°</b>	Rwy Idg <b>5997</b>
	TDZE <b>3373</b>
	Apt Elev <b>3374</b>

**▽** DME/DME RNP-0.3 NA. If local altimeter setting not received, use Lubbock altimeter setting and increase all MDAs 100 feet.  
**▲** Visibility reduction by helicopters NA.

MISSED APPROACH: Climb to 5100 direct JEKUT and hold.

ASOS <b>119.675</b>	LUBBOCK APP CON <b>119.2 351.8</b>	CLNC DEL <b>121.7</b>	UNICOM <b>123.0 (CTAF) 0</b>
------------------------	---------------------------------------	--------------------------	---------------------------------



CATEGORY	A	B	C	D
LNAV MDA	3820-1 447 (500-1)		3820-1¼ 447 (500-1¼)	3820-1½ 447 (500-1½)
CIRCLING	3920-1 546 (600-1)	3940-1 566 (600-1)	3940-1½ 566 (600-1½)	3940-2 566 (600-2)

PLAINVIEW, TEXAS  
 Orig 28SEP06

34°10'N-101°43'W

# RNAV (GPS) RWY 22

SC-2: 26 APR 2018 to 24 MAY 2018

SC-2: 26 APR 2018 to 24 MAY 2018